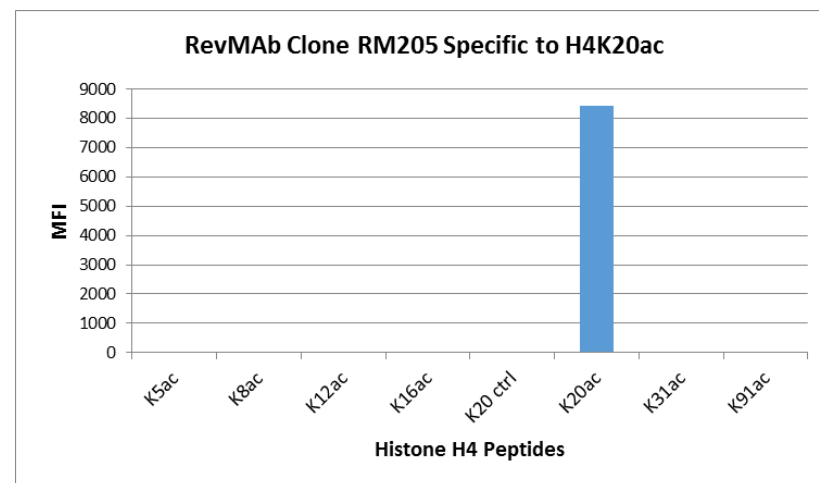
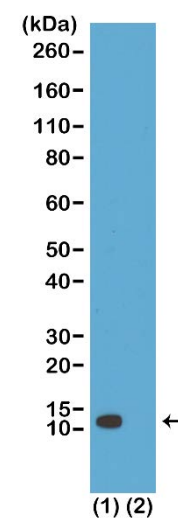


Certificate of Analysis

Product:	Rabbit Monoclonal Antibody Anti-Acetyl-Histone H4 (Lys20) Rabbit Monoclonal Antibody, Clone RM205
Catalog No.:	31-1084-00
Lot No.:	
Clone	RM205
Specificity	This antibody reacts to Histone H4 acetylated at Lysine 20 (K20ac). No cross reactivity with other acetylated Lysines in Histone H4.
Application:	Western Blot, ELISA, Multiplex
Immunogen:	An acetyl-peptide corresponding to Acetyl-Histone H4 (Lys20).
Purity:	Protein A affinity purified from an animal origin-free culture supernatant
Size:	100 µg
Concentration:	1.0 mg/mL
Buffer:	50% Glycerol/PBS with 1% BSA and 0.09% sodium azide
Usage:	WB: 1 µg/mL - 2 µg/mL; ELISA: 0.2 µg/mL - 1 µg/mL; Multiplex: 0.1 µg/mL – 1 µg/mL.
Storage and Stability:	Stable for 1 Year at -20.0°C from date of receipt.
Country of Origin:	U.S.A.
Intended Use:	For Research Use Only Not for Diagnostic or Therapeutic Use



RM205 specifically reacts to Histone H4 acetylated at Lysine 20 (K20ac). No cross reactivity with unmodified Lysine 20 (K20 ctrl), acetylated Lysine 5 (K5ac), Lysine 8 (K8ac), Lysine 12 (K12ac), Lysine 16 (K16ac), Lysine 31 (K31ac), or Lysine 91 (K91) in Histone H4.



Western Blot of (1) acid extracts of HeLa cells; (2) recombinant Histone H4. Using RM205 at 1 µg/mL, showed a band of Histone H4 acetylated at Lysine 20 in HeLa cells.