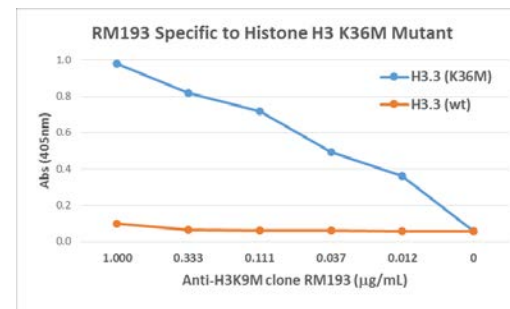
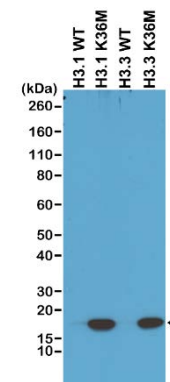


Certificate of Analysis

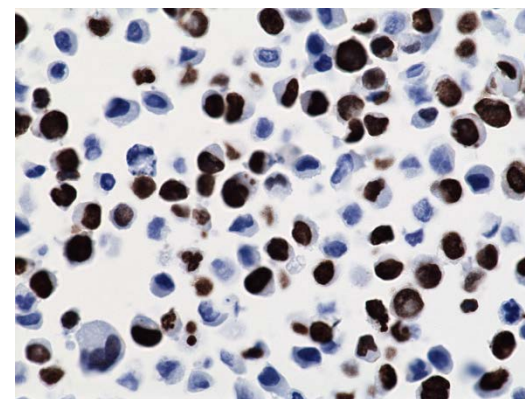
Product:	Rabbit Monoclonal Antibody Anti-Histone H3 K36M Rabbit Monoclonal Antibody, Clone RM193
Catalog No.:	31-1085-00
Lot No.:	
Clone:	RM193
Specificity:	This antibody reacts to the Histone H3 K36M mutant. No cross reactivity with wild type Histone H3.
Application:	Western Blot, ELISA, Immunohistochemistry and Immunocytochemistry.
Immunogen:	A peptide corresponding to Histone H3 K36M mutant
Purity:	Protein A affinity purified from an animal origin-free culture supernatant
Size:	50 µg
Concentration:	1 mg/mL
Buffer:	50% Glycerol/PBS with 1% BSA and 0.09% sodium azide
Usage:	WB: 0.5 - 2 µg/mL; ELISA: 0.5 - 2 µg/mL; IHC, ICC: 0.5 - 5 µg/mL.
Storage and Stability:	Stable for 1 Year at -20.0°C from date of receipt.
Country of Origin:	U.S.A.
Intended Use:	For Research Use Only Not for Diagnostic or Therapeutic Use



Sandwich ELISA performed on the lysates of 293T cells overexpressing Histone H3.3 K36M mutant or Histone H3.3 wild type His-tag proteins, shows the specificity of RM193 to the K36M mutant. The His-tag fusion proteins were captured by an Anti-His-Tag antibody.



Western Blot analysis of cell lysates prepared from 293T overexpressing the wild type or K36M mutant proteins of Histone H3.1 and H3.3, using anti-Histone H3 K36M Clone RM193.



293T cells overexpressing Histone H3 K36M mutant stained with anti-Histone H3 K36M Clone RM193.