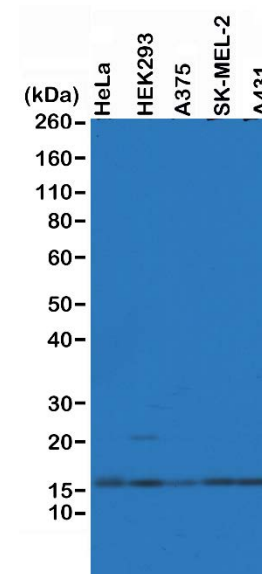


Certificate of Analysis

Product:	Rabbit Monoclonal Antibody Anti-Histone H2AZ Rabbit Monoclonal Antibody, Clone RM215
Catalog No.:	31-1091-00
Lot No.:	
Clone	RM215
Specificity	This antibody reacts to Histone H2AZ protein, independent of post-translational modifications. No cross reactivity with other histone proteins.
Application:	Western Blot, ELISA, Multiplex
Immunogen:	A peptide corresponding to the C-terminus of human Histone H2AZ.
Purity:	Protein A affinity purified from an animal origin-free culture supernatant
Size:	100 µg
Concentration:	1.0 mg/mL
Buffer:	50% Glycerol/PBS with 1% BSA and 0.09% sodium azide
Usage:	WB: 0.1 µg/mL – 0.5 µg/mL; ELISA: 0.1 µg/mL - 1 µg/mL; Multiplex: 0.1 µg/mL – 1 µg/mL.
Storage and Stability:	Stable for 1 Year at -20.0°C from date of receipt.
Country of Origin:	U.S.A.
Intended Use:	For Research Use Only Not for Diagnostic or Therapeutic Use



Western Blot of HeLa, HEK293, A375, SK-MEL-2 and A431 whole cell lysates, using RM215 at 0.5 µg/mL, showed endogenous Histone H2AZ in HeLa, HEK293, A375, SK-MEL-2 and A431 cells.