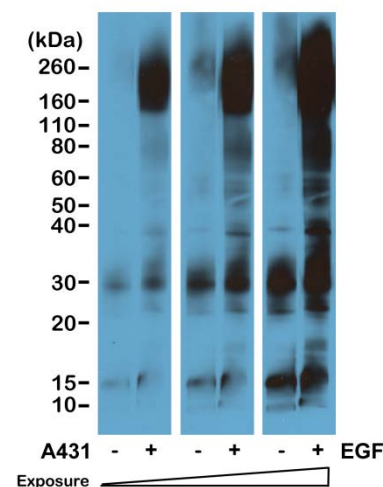
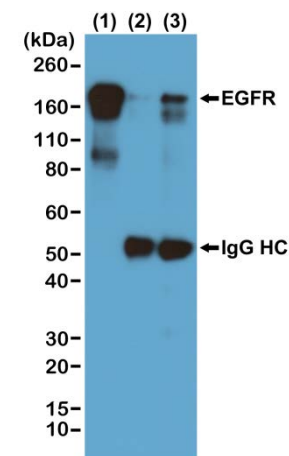


## Certificate of Analysis

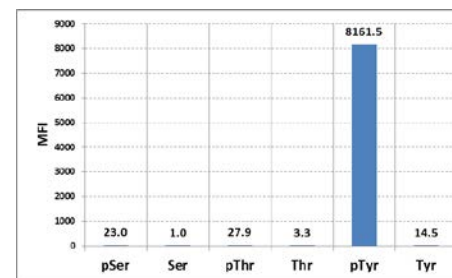
<b>Product:</b>	Rabbit Monoclonal Antibody Anti-Phosphotyrosine Rabbit Monoclonal Antibody, Clone RM111
<b>Catalog No.:</b>	32-1011-00
<b>Lot No.:</b>	
<b>Clone</b>	RM111
<b>Specificity</b>	This antibody reacts to tyrosine-phosphorylated proteins. No cross reactivity with nonphosphorylated tyrosine, phosphoserine, and phosphothreonine.
<b>Application:</b>	Western Blot, Immunoprecipitation, Immunocytochemistry, Immunohistochemistry, Flow Cytometry, ELISA
<b>Immunogen:</b>	Phosphotyrosine-BSA conjugate
<b>Purity:</b>	Protein A affinity purified from an animal origin-free culture supernatant
<b>Size:</b>	100 µg
<b>Concentration:</b>	0.5 mg/mL
<b>Buffer:</b>	50% Glycerol/PBS with 1% BSA and 0.09% sodium azide
<b>Usage:</b>	WB: 1:1000 -1:5000 dilution; IP, ChIP: 1:200 -1:1000 dilution; ICC, IHC: 1:200 -1:500 dilution.
<b>Storage and Stability:</b>	Stable for 1 Year at -20.0°C from date of receipt.
<b>Country of Origin:</b>	U.S.A.
<b>Intended Use:</b>	<b>For Research Use Only Not for Diagnostic or Therapeutic Use</b>



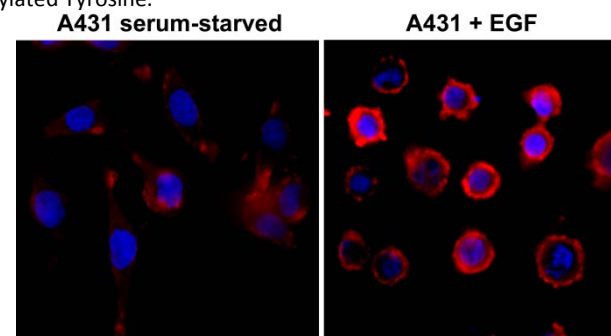
Western blot of serum-starved A431 cells nontreated or treated with EGF, using RevMAB Clone RM111 at 1/5000 dilution. The blot was exposed to the film at different time points.



Immunoprecipitation of EGF-treated A431 cells by RevMAB Clone RM111 at 1/1000 dilution, was blotted with an anti-EGFR rabbit monoclonal antibody. (1) Whole lysate control; (2) IP by rabbit IgG control; (3) IP by Clone RM111.



Luminex analysis of Clone RM111's reaction against phosphorylated or nonphosphorylated Serine, Threonine, and Tyrosine. RevMAB Clone RM111 reacts only to phosphorylated Tyrosine.



Immunocytochemistry of serum-starved A431 cells nontreated or treated with EGF, using RevMAB Clone RM111 at 1/500 dilution (followed by a PE conjugated secondary antibody, red) and DAPI (blue).