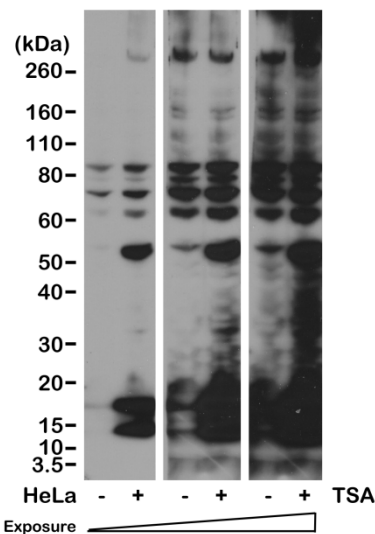
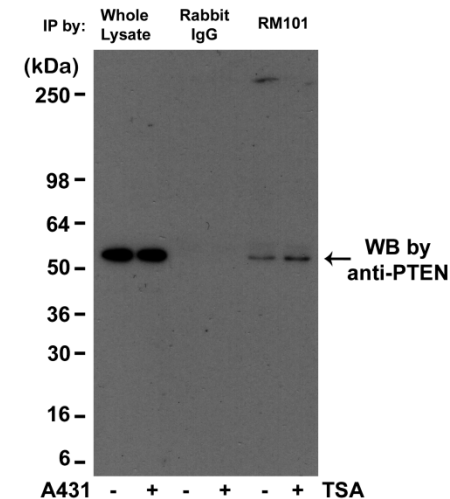


## Certificate of Analysis

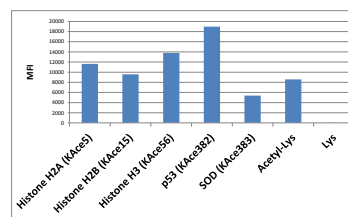
<b>Product:</b>	Rabbit Monoclonal Antibody Anti-Acetylated Lysine Rabbit Monoclonal Antibody, Clone RM101
<b>Catalog No.:</b>	32-1012-00
<b>Lot No.:</b>	
<b>Clone</b>	RM101
<b>Specificity</b>	This antibody reacts to lysine-acetylated proteins. No cross reactivity with nonacetylated lysine, or lysines with other modifications.
<b>Application:</b>	Western Blot, Immunoprecipitation, Immunocytochemistry, Immunohistochemistry, Flow Cytometry, ELISA
<b>Immunogen:</b>	Acetyllysine-BSA
<b>Purity:</b>	Protein A affinity purified from an animal origin-free and protein-free culture supernatant
<b>Size:</b>	100 µg
<b>Concentration:</b>	1.0 mg/mL
<b>Buffer:</b>	50% Glycerol/PBS with 1% BSA and 0.09% sodium azide
<b>Usage:</b>	WB: 1:500 -1:2000 dilution; IP, ChIP: 1:100 -1:500 dilution; ICC, IHC: 1:100 -1:500 dilution.
<b>Storage and Stability:</b>	Stable for 1 Year at -20.0°C from date of receipt
<b>Country of Origin:</b>	U.S.A.
<b>Intended Use:</b>	<b>For Research Use Only Not for Diagnostic or Therapeutic Use</b>



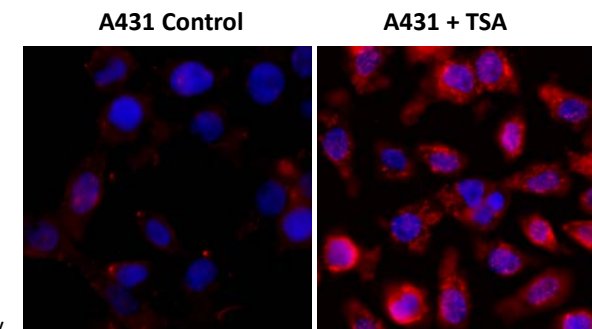
Western blot of HeLa cells nontreated or treated with Trichostatin A (TSA), using RevMAB Clone RM101 at 1/2000 dilution.



Immunoprecipitation of A431 cell lysates, using RevMAB clone RM101 at 1/500 dilution, was blotted with anti-PTEN mouse monoclonal antibody.



RevMAB rabbit monoclonal antibody clone RM101 recognizes acetylated lysine in peptides with different sequences. It does not react with non-acetylated lysine.



Immunocytochemistry of A431 cells nontreated or treated with Trichostatin A (TSA), using RevMAB Clone RM101 at 1/500 dilution (followed by a PE conjugated secondary antibody, red) and DAPI (blue).