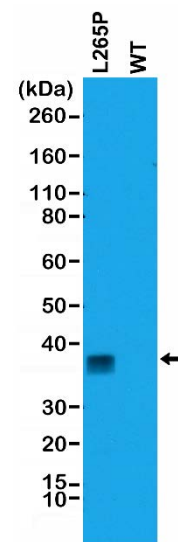
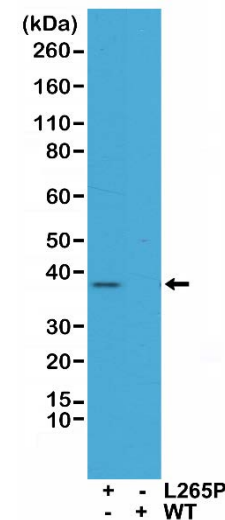


## Certificate of Analysis

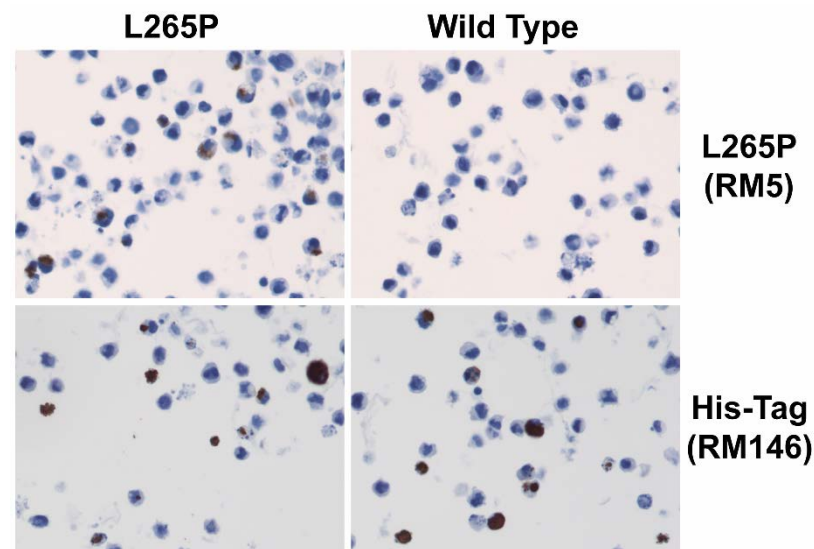
<b>Product:</b>	Rabbit Monoclonal Antibody Anti-MYD88 L265P Rabbit Monoclonal Antibody, Clone RM5
<b>Catalog No.:</b>	31-1134-00
<b>Lot No.:</b>	
<b>Clone:</b>	RM5
<b>Specificity:</b>	This antibody reacts to the MYD88 L265P mutant. No cross reactivity with wild type MYD88.
<b>Application:</b>	Immunohistochemistry and Western Blot.
<b>Immunogen:</b>	A synthetic peptide corresponding to MYD88 L265P mutant.
<b>Purity:</b>	Protein A affinity purified from an animal origin-free culture supernatant
<b>Size:</b>	100 µL
<b>Buffer:</b>	50% Glycerol/PBS with 1% BSA and 0.09% sodium azide
<b>Usage:</b>	IHC: 1:100 dilution; WB: 1:100 dilution.
<b>Storage and Stability:</b>	Stable for 1 Year at -20.0°C from date of receipt.
<b>Country of Origin:</b>	U.S.A.
<b>Intended Use:</b>	<b>For Research Use Only Not for Diagnostic or Therapeutic Use</b>



Western Blot analysis of cell lysates prepared from 293T cells transfected with a DNA construct encoding MYD88 L265P mutant or wild type, using anti-MYD88 L265P (RM5) rabbit monoclonal antibody.



Western Blot analysis of K562 cell lysates mixed with MYD88 L265P mutant or wild type recombinant protein, using anti-MYD88 L265P (RM5) rabbit monoclonal antibody.



Immunohistochemical staining of formalin fixed and paraffin embedded 293T cells transfected with a DNA construct encoding His-Tag MYD88 L265 mutant or wild type, using anti-MYD88 L265P (RM5) or anti-His-Tag (RM146) rabbit monoclonal antibody.