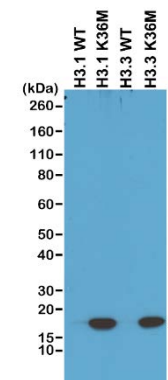
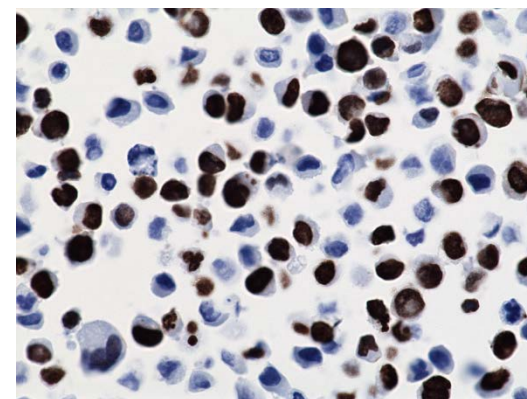


Certificate of Analysis

Product:	Rabbit Monoclonal Antibody Anti-Histone H3 K36M Rabbit Monoclonal Antibody, Clone RM193
Catalog No.:	31-1085-00
Lot No.:	
Clone:	RM193
Specificity:	This antibody reacts to the Histone H3 K36M mutant. No cross reactivity with wild type Histone H3.
Application:	Western Blot, ELISA, Immunohistochemistry and Immunocytochemistry (ICC/IF), Chromatin IP
Immunogen:	A peptide corresponding to Histone H3 K36M mutant
Purity:	Protein A affinity purified from an animal origin-free culture supernatant
Size:	50 µg
Concentration:	1 mg/mL
Buffer:	50% Glycerol/PBS with 1% BSA and 0.09% sodium azide
Usage:	WB: 0.5 - 2 µg/mL; ELISA: 0.5 - 2 µg/mL; IHC, ICC/IF: 0.5 - 5 µg/mL.
Storage and Stability:	Stable for 1 Year at -20.0°C from date of receipt.
Country of Origin:	U.S.A.
Intended Use:	For Research Use Only Not for Diagnostic or Therapeutic Use



encoding wild type or K36M mutant proteins of Histone H3.1 and H3.3, using anti-Histone H3



Immunohistochemical staining of formalin fixed and paraffin embedded 293T cells transfected with a DNA construct encoding Histone H3 K36M, stained with anti-Histone H3 K36M clone RM193.