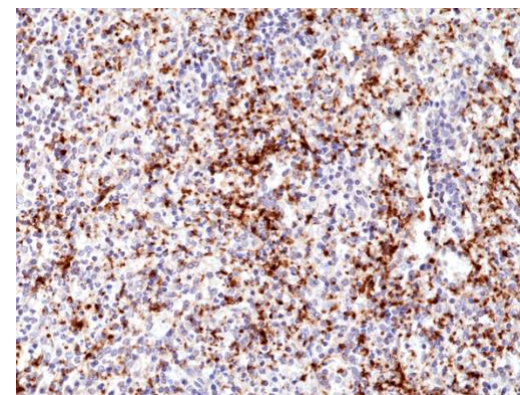
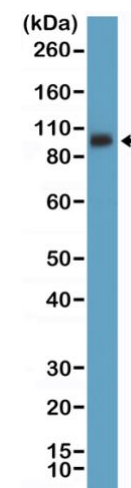


Certificate of Analysis

Product:	Rabbit Monoclonal Antibody Anti-Integrin β 3/CD61 Rabbit Monoclonal Antibody, Clone RM382
Catalog No.:	31-1268-00
Lot No.:	
Clone:	RM382
Specificity:	This antibody reacts to Human Integrin beta3A / CD61
Application:	Immunohistochemistry, Western Blot
Immunogen:	A peptide corresponding to the internal region of human Integrin β 3.
Purity:	Protein A affinity purified from an animal origin-free culture supernatant
Size:	100 μ L
Buffer:	50% Glycerol/PBS with 1% BSA and 0.09% sodium azide
Usage:	IHC: 1:250 -1:500 dilution; WB: 1:5000 - 1:25000 dilution.
Storage and Stability:	Stable for 1 Year at -20.0°C from date of receipt.
Country of Origin:	U.S.A.
Intended Use:	For Research Use Only Not for Diagnostic or Therapeutic Use



Immunohistochemical staining of formalin fixed and paraffin embedded human spleen tissue section using anti-CD61 rabbit monoclonal antibody (Clone RM382) at a 1:500 dilution.



Western Blot of Mouse Spleen tissue lysate using anti-CD61 rabbit monoclonal antibody (Clone RM382) at a 1:5000 dilution.