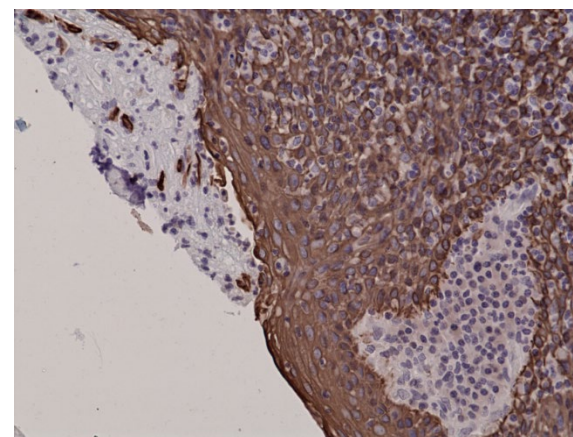
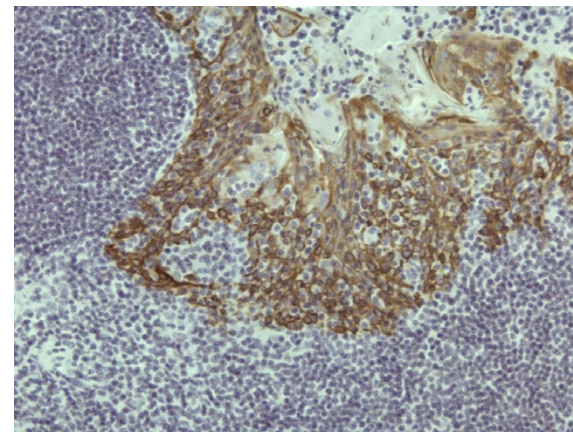
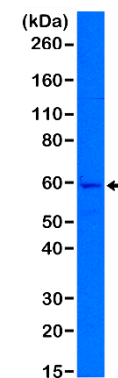


Certificate of Analysis

Product:	Rabbit Monoclonal Antibody Anti-Cytokeratin 5 Rabbit Monoclonal Antibody, Clone RM226
Catalog No.:	31-1105-00
Lot No.:	
Clone:	RM226
Specificity:	This antibody reacts to human CK-5 (Cytokeratin 5), and does not cross-react to CK-6 (Cytokeratin 6). This antibody may also react to bovine, mouse, or rat Cytokeratin, as predicted by immunogen homology.
Application:	Immunohistochemistry, Western Blot
Immunogen:	A peptide corresponding to the C-terminus of Human Cytokeratin 5
Purity:	Protein A affinity purified from an animal origin-free culture supernatant
Size:	31-1105-00-S: 0.1 mL 31-1105-00-L: 1.0 mL
Buffer:	50% Glycerol/PBS with 1% BSA and 0.09% sodium azide
Usage:	IHC: 1:100 -1:400 dilution; WB: 1:1000 dilution.
Storage and Stability:	Stable for 1 Year at -20.0°C from date of receipt.
Country of Origin:	U.S.A.
Intended Use:	For Research Use Only Not for Diagnostic or Therapeutic Use



Immunohistochemical staining of formalin fixed and paraffin embedded human tonsil tissue sections.



Western Blot of A431 cell lysates using RM226 using Anti-CK-5 rabbit monoclonal antibody (Clone RM226) at a 1:1000 dilution.