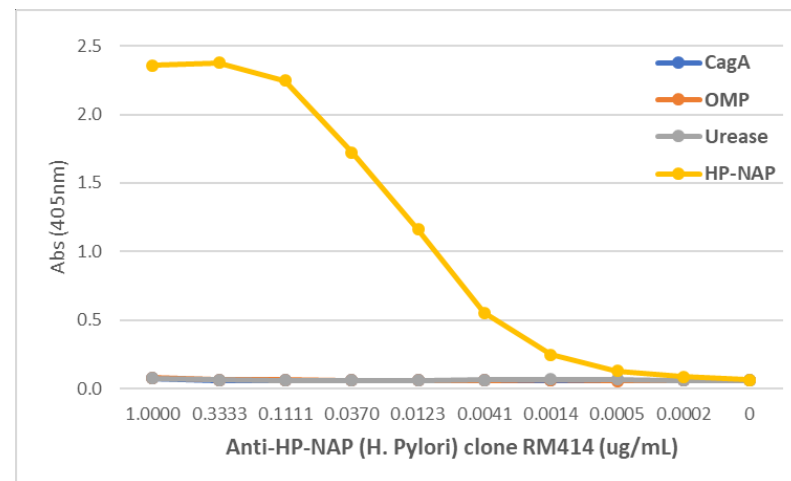


Certificate of Analysis

Product:	Rabbit Monoclonal Antibody Anti-HP-NAP (Helicobacter Pylori) Rabbit Monoclonal Antibody, Clone RM414
Catalog No.:	31-1300-00
Lot No.:	
Clone:	RM414
Specificity:	This antibody reacts to the neutrophil-activating protein (HP-NAP) of Helicobacter pylori
Application:	ELISA
Immunogen:	Proteins purified from Helicobacter pylori
Purity:	Protein A affinity purified from an animal origin-free culture supernatant
Size:	100 µg
Concentration:	1.0 mg/mL
Buffer:	50% Glycerol/PBS with 1% BSA and 0.09% sodium azide
Usage:	ELISA: 0.01 µg/mL – 0.2 µg/mL
Storage and Stability:	Stable for 1 Year at -20.0°C from date of receipt.
Country of Origin:	U.S.A.
Intended Use:	For Research Use Only Not for Diagnostic or Therapeutic Use



An ELISA of Helicobacter Pylori proteins using Anti-HP-NAP Rabbit Monoclonal Antibody Clone RM414. The plate was coated with 1 ug/mL of CagA, OMP, Urease, or HP-NAP of H. Pylori. A serial dilution of RM414 was used as the primary antibody. An alkaline phosphatase conjugated anti-rabbit IgG as the secondary antibody.