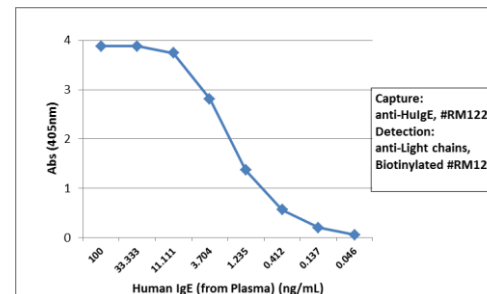
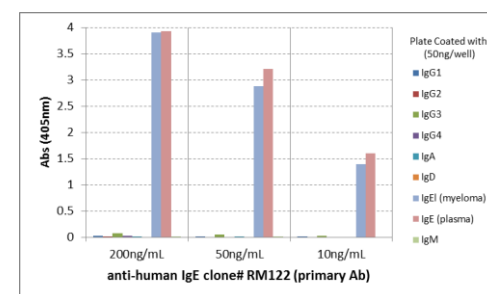


Certificate of Analysis

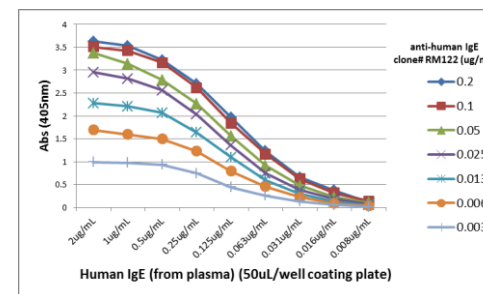
Product:	Rabbit Monoclonal Antibody Anti-Human IgE Rabbit Monoclonal Antibody, Clone RM122
Catalog No.:	31-1024-00
Lot No.:	
Clone	RM122
Specificity	This antibody reacts to human IgE. No cross reactivity with human IgG, IgM, IgD, or IgA.
Application:	ELISA
Immunogen:	Human IgE
Purity:	Protein A affinity purified from an animal origin-free culture supernatant
Size:	100 µg
Concentration:	1.0 mg/mL
Buffer:	50% Glycerol/PBS with 1% BSA and 0.09% sodium azide
Usage:	ELISA: 10ng/well – 100ng/well (for Capture); 0.01ug/mL – 0.1ug/mL (for Detection);
Storage and Stability:	Stable for 1 Year at -20.0°C from date of receipt.
Country of Origin:	U.S.A.
Intended Use:	For Research Use Only Not for Diagnostic or Therapeutic Use



Sandwich ELISA using RM122 as the capture antibody (25ng/well), and Biotinylated anti-human light chains ($\kappa+\lambda$) antibody RM129 as the detection antibody, followed by an alkaline phosphatase conjugated streptavidin.



ELISA of human immunoglobulins shows RM122 reacts to both IgE λ from human myeloma and IgE from human plasma. No cross reactivity with human IgG, IgM, IgD, or IgA. The plate was coated with 50 ng/well of different immunoglobulins. 200 ng/mL, 50ng/mL, or 10 ng/mL of RM122 was used as the primary antibody. An alkaline phosphatase conjugated anti-rabbit IgG as the secondary antibody.



A titer ELISA using RM122. The plate was coated with different amounts of human IgE (from plasma). A serial dilution of RM122 was used as the primary antibody. An alkaline phosphatase conjugated anti-rabbit IgG as the secondary antibody.