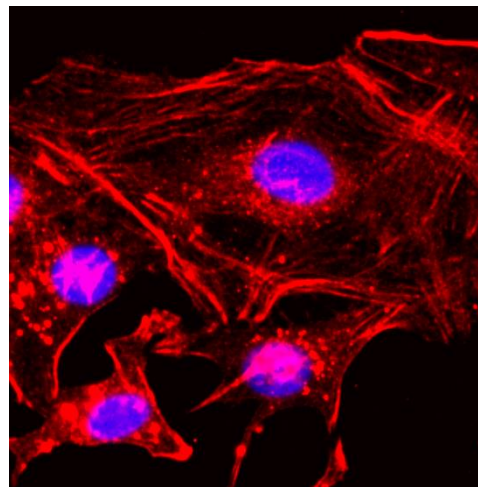


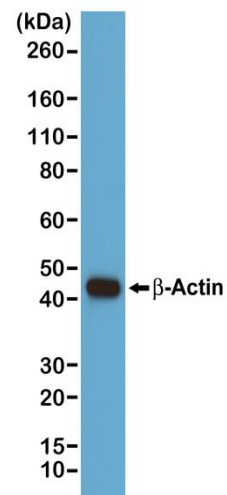
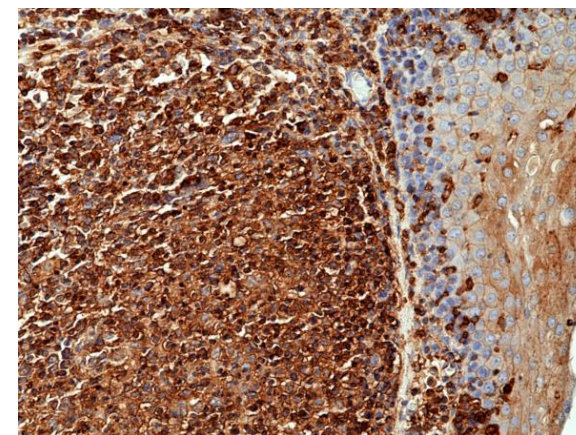
## Certificate of Analysis

<b>Product:</b>	Rabbit Monoclonal Antibody Anti- $\beta$ -Actin Rabbit Monoclonal Antibody, Clone RM112
<b>Catalog No.:</b>	31-1013-00
<b>Lot No.:</b>	
<b>Clone</b>	RM112
<b>Specificity</b>	This antibody reacts to $\beta$ -Actin (Actin, cytoplasmic 1). No cross reactivity with other isoforms of Actin.
<b>Application:</b>	Western Blot, Immunoprecipitation, Immunocytochemistry, Immunohistochemistry, Flow Cytometry, ELISA
<b>Immunogen:</b>	A peptide corresponding to the N-terminus of $\beta$ -actin
<b>Purity:</b>	Protein A affinity purified from an animal origin-free culture supernatant
<b>Size:</b>	100 $\mu$ L
<b>Buffer:</b>	50% Glycerol/PBS with 1% BSA and 0.09% sodium azide
<b>Usage:</b>	WB: 1:1000 dilution; IP, ChIP: 1:200 dilution; ICC, IHC: 1:200 dilution.
<b>Storage and Stability:</b>	Stable for 1 Year at -20.0°C from date of receipt.
<b>Country of Origin:</b>	U.S.A.
<b>Intended Use:</b>	<b>For Research Use Only Not for Diagnostic or Therapeutic Use</b>



Immunocytochemical staining of HeLa cells, using anti- $\beta$ -Actin RevMAB Clone RM112 at 1/200 dilution (red). Nuclei have been labeled with DAPI (blue).

Immunohistochemical staining of formalin fixed and paraffin embedded human tonsil tissue using Anti-beta actin Rabbit Monoclonal Antibody (Clone RM112) at a 1:1000 dilution.



Western blot of A431 cells, using anti- $\beta$ -Actin RevMAB Clone RM112 at a 1/1000 dilution, showed a band of  $\beta$ -Actin at the predicted MW (42 kDa).