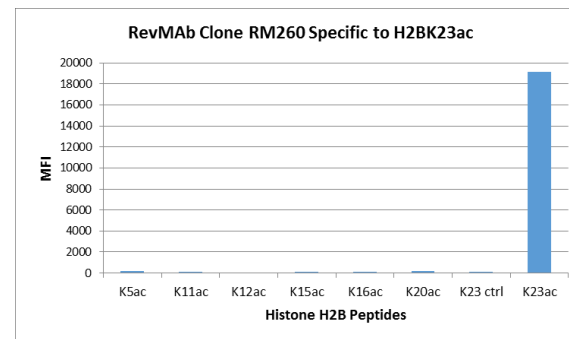
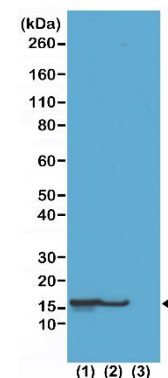


Certificate of Analysis

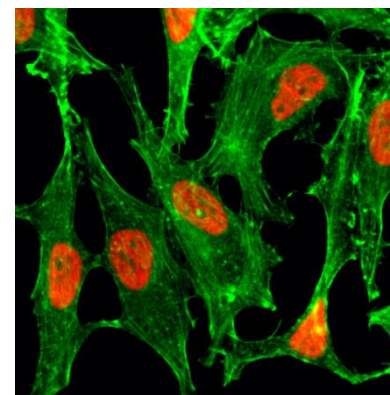
Product:	Rabbit Monoclonal Antibody Anti-Acetyl-Histone H2B (Lys23) Rabbit Monoclonal Antibody, Clone RM260
Catalog No.:	31-1141-00
Lot No.:	
Clone	RM260
Specificity	This antibody reacts to Histone H2B acetylated at Lysine 23 (K23ac). No cross reactivity with other acetylated Lysines in histones.
Application:	Western Blot, Immunocytochemistry, ELISA, Multiplex
Immunogen:	An acetyl-peptide corresponding to Acetyl-Histone H2B (Lys23).
Purity:	Protein A affinity purified from an animal origin-free culture supernatant
Concentration:	1.0 mg/mL
Buffer:	50% Glycerol/PBS with 1% BSA and 0.09% sodium azide
Usage:	WB: 0.5 µg/mL - 2 µg/mL; ICC: 0.5 µg/mL - 2 µg/mL; ELISA: 0.2 µg/mL - 1 µg/mL; Multiplex: 0.1 µg/mL – 0.5 µg/mL.
Storage and Stability:	Stable for 1 Year at -20.0°C from date of receipt.
Country of Origin:	U.S.A.
Intended Use:	For Research Use Only Not for Diagnostic or Therapeutic Use



RM260 specifically reacts to Histone H2B acetylated at Lysine 23 (K23ac). No cross reactivity with acetylated Lysine 5 (K5ac), Lysine 11 (K11ac), Lysine 12 (K12ac), Lysine 15 (K15ac), Lysine 20 (K20ac), or non-mordified Lysine 23 in histone H2B.



Western Blot of (1) acid extracts of HeLa cells treated with sodium butyrate, (2) acid extracts of HeLa cells untreated, and (3) recombinant Histone H2B, Using Acetyl-Histone H2B (Lys23) rabbit monoclonal antibody (RM260) at 0.5 µg/mL.



Immunocytochemistry of HeLa cells treated with sodium butyrate, using Acetyl-Histone H2B (Lys23) rabbit monoclonal antibody (RM260) (red). Actin filaments have been labeled with fluorescein phalloidin (green).