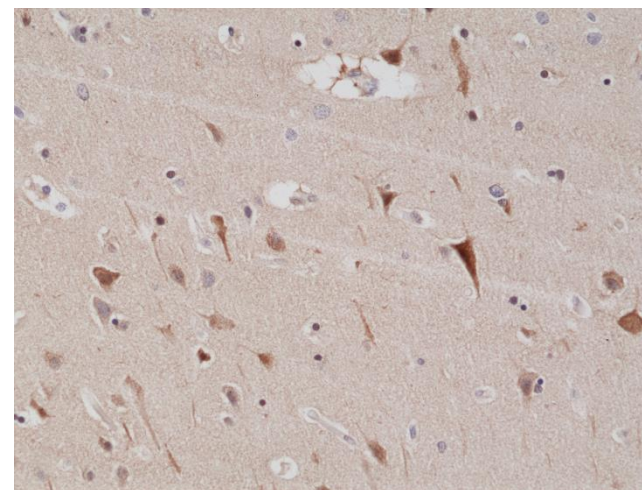
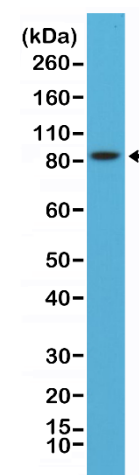


Certificate of Analysis

Product:	Rabbit Monoclonal Antibody Anti-PSD95 (Disks large homolog 4) Rabbit Monoclonal Antibody, Clone RM288
Catalog No.:	31-1172-00
Lot No.:	
Clone:	RM288
Specificity:	This antibody reacts to human and mouse PSD95. It may also react to rat PSD95, as predicted by immunogen homology.
Application:	Immunohistochemistry, Western Blot
Immunogen:	A peptide corresponding to the N-terminus of human PSD95.
Purity:	Protein A affinity purified from an animal origin-free culture supernatant
Size:	100 µL
Buffer:	50% Glycerol/PBS with 1% BSA and 0.09% sodium azide
Usage:	IHC: 1:100 -1:200 dilution; WB: 1:5000 - 1:8000 dilution.
Storage and Stability:	Stable for 1 Year at -20.0°C from date of receipt.
Country of Origin:	U.S.A.
Intended Use:	For Research Use Only Not for Diagnostic or Therapeutic Use



Immunohistochemical staining of formalin fixed and paraffin embedded human brain tissue sections using anti-PSD95 rabbit monoclonal antibody (clone RM288) at a 1:200 dilution.



Western Blot of mouse brain lysates using anti-PSD95 rabbit monoclonal antibody (clone RM288) at a 1:8000 dilution.