

Certificate of Analysis

Product:	Rabbit Monoclonal Antibody Anti-HSP70 Rabbit Monoclonal Antibody, Clone RM432
Catalog No.:	31-1320-00
Lot No.:	
Clone:	RM432
Specificity:	This antibody reacts to human HSP70
Application:	Immunohistochemistry, Western Blot
Immunogen:	A recombinant human HSP70 protein
Purity:	Protein A affinity purified from an animal origin-free culture supernatant.
Size:	100 µL
Buffer:	50% Glycerol/PBS with 1% BSA and 0.09% sodium azide
Usage:	IHC: 1:100 – 1:500 dilution; WB: 1:2000 - 1:5000 dilution.
Storage and Stability:	Stable for 1 Year at -20.0°C from date of receipt.
Country of Origin:	U.S.A.
Intended Use:	For Research Use Only Not for Diagnostic or Therapeutic Use

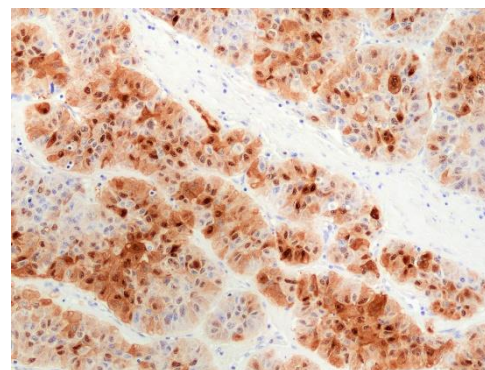


Fig 1. Immunohistochemical staining of formalin fixed and paraffin embedded human liver cancer tissue sections using anti-HSP70 antibody (RM432) at 1:500 dilution.

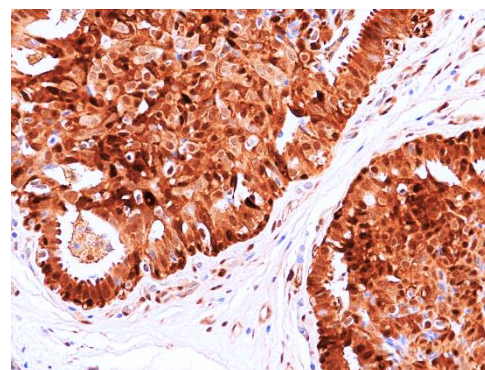


Fig 2. Immunohistochemical staining of formalin fixed and paraffin embedded human breast cancer tissue sections using anti-HSP70 antibody (RM432) at 1:200 dilution.

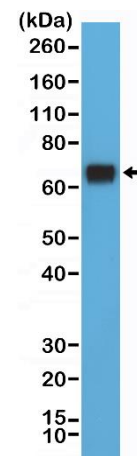


Fig 3. Western Blot of HeLa cell lysate using anti-HSP70 rabbit monoclonal antibody (Clone RM432) at a 1:5000 dilution.