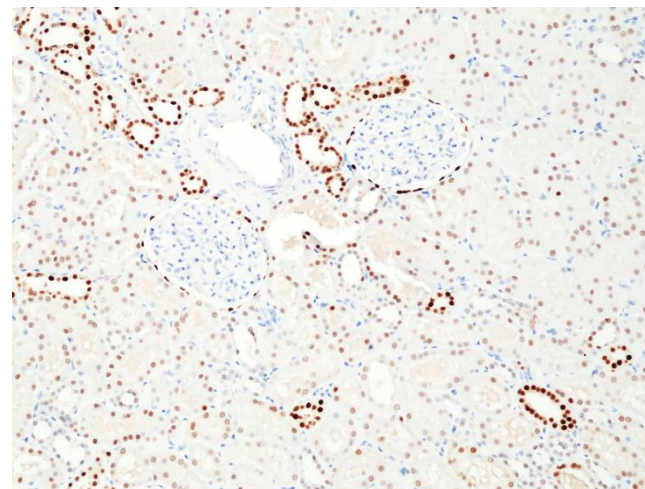
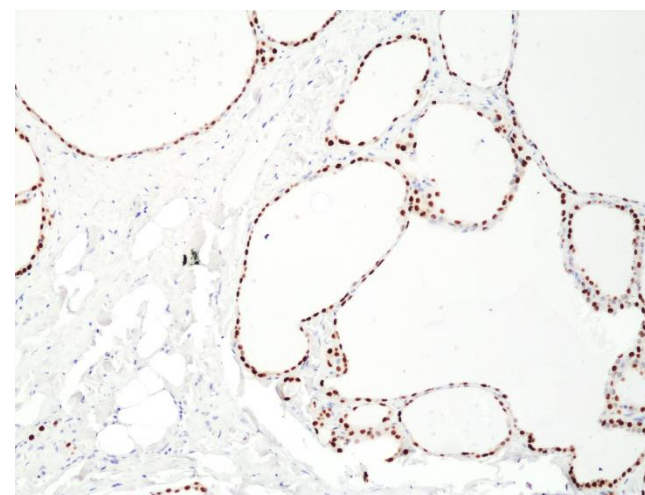


## Certificate of Analysis

<b>Product:</b>	Rabbit Monoclonal Antibody Anti-Paired box protein Pax-8 Rabbit Monoclonal Antibody, Clone RM436
<b>Catalog No.:</b>	31-1324-00
<b>Lot No.:</b>	
<b>Clone:</b>	RM436
<b>Specificity:</b>	This antibody reacts to human Paired box protein Pax-8. It may also react to mouse and rat Paired box protein Pax-8, as predicted by immunogen homology.
<b>Application:</b>	Immunohistochemistry
<b>Immunogen:</b>	A peptide corresponding to C-terminus of human Paired box protein Pax-8
<b>Purity:</b>	Protein A affinity purified from an animal origin-free culture supernatant
<b>Size:</b>	100 µL
<b>Buffer:</b>	50% Glycerol/PBS with 1% BSA and 0.09% sodium azide
<b>Usage:</b>	IHC: 1:100 -1:400 dilution;
<b>Storage and Stability:</b>	Stable for 1 Year at -20.0°C from date of receipt.
<b>Country of Origin:</b>	U.S.A.
<b>Intended Use:</b>	<b>For Research Use Only Not for Diagnostic or Therapeutic Use</b>



Immunohistochemical staining of formalin fixed and paraffin embedded human Kidney tissue section using anti-Paired box protein Pax-8 rabbit monoclonal antibody (Clone RM436) at a 1:400 dilution.



Immunohistochemical staining of formalin fixed and paraffin embedded human thyroid tissue section using anti-Paired box protein Pax-8 rabbit monoclonal antibody (Clone RM436) at a 1:400 dilution.