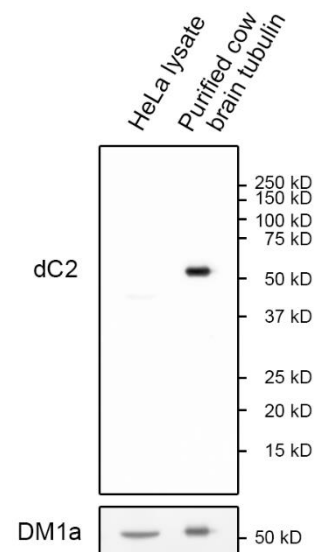


Certificate of Analysis

Product:	Rabbit Monoclonal Antibody Anti- $\Delta 2$ α -Tubulin (dC2-alpha-tubulin) Rabbit Monoclonal Antibody, Clone RM447
Catalog No.:	31-1339-00
Lot No:	
Clone:	RM447
Specificity:	This antibody specifically reacts to $\Delta 2$ α -Tubulin (dC2-alpha-Tubulin), a C-terminally trimmed version of alpha-tubulin lacks a carboxy-terminal glutamyl-tyrosine group.
Application:	Western Blot, Immunocytochemistry
Immunogen:	A peptide corresponding to dC2-alpha-Tubulin
Purity:	Protein A affinity purified from an animal origin-free culture supernatant
Size:	100 μ L
Buffer:	50% Glycerol/PBS with 1% BSA and 0.09% sodium azide
Usage:	WB: 1:1000 -1:2000 dilution; ICC/IF: 1:100 - 1:200 dilution.
Storage and Stability:	Stable for 1 Year at -20.0°C from date of receipt.
Country of Origin:	U.S.A.
Intended Use:	For Research Use Only Not for Diagnostic or Therapeutic Use



Western Blot analysis of HeLa cell lysate and purified cow brain tubulin using anti-dC2-alpha-tubulin rabbit monoclonal antibody (Clone RM447) at a 1:1000 dilution. *Image courtesy of Dr. Ryoma Ohi, University of Michigan, Michigan, US*