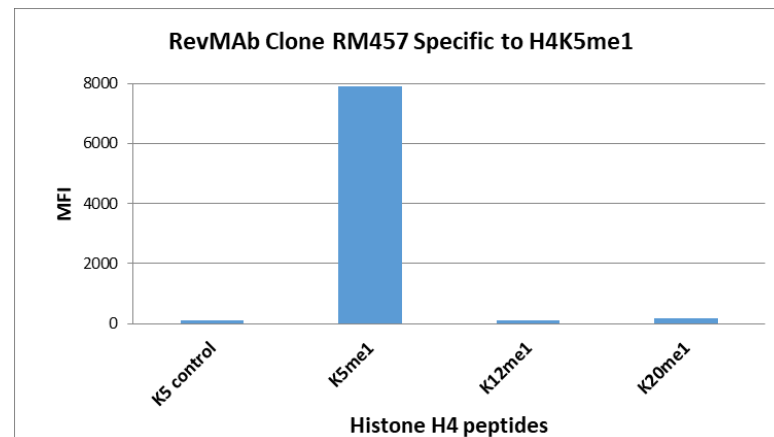
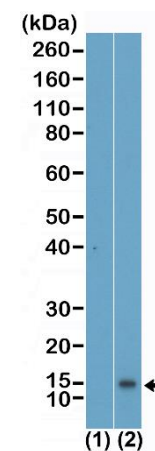


Certificate of Analysis

Product:	Rabbit Monoclonal Antibody Anti-Monomethyl-Histone H4 (Lys5) Rabbit Monoclonal Antibody, Clone RM457
Catalog No.:	31-1349-00
Lot No:	
Clone	RM457
Specificity	This antibody reacts to Histone H4 monomethylated at Lysine 5 (K5me1). No cross reactivity with non-modified Lysine 5, or other monomethylations in histone H4.
Application:	Western Blot, ELISA, Multiplex
Immunogen:	A monomethyl-peptide corresponding to monomethyl-Histone H4 (Lys5).
Purity:	Protein A affinity purified from an animal origin-free culture supernatant
Size:	100 µg
Concentration:	1.0 mg/mL
Buffer:	50% Glycerol/PBS with 1% BSA and 0.09% sodium azide
Usage:	WB: 0.1 µg/mL – 2 µg/mL; ELISA: 0.5 µg/mL - 1 µg/mL; Multiplex: 0.2 µg/mL – 5 µg/mL.
Storage and Stability:	Stable for 1 Year at -20.0°C from date of receipt.
Country of Origin:	U.S.A.
Intended Use:	For Research Use Only Not for Diagnostic or Therapeutic Use



RM457 specifically reacts to Histone H4 monomethylated at Lysine 5 (K5me1). No cross reactivity with non-modified Lysine 5, or other monomethylations in histone H4.



Western Blot of acid extracts of HeLa cells (2) and recombinant histone H4 (1), using RM457 at 0.2 µg/mL, showed a band of histone H4 monomethylated at Lysine 5 (K5me1) in HeLa cells.