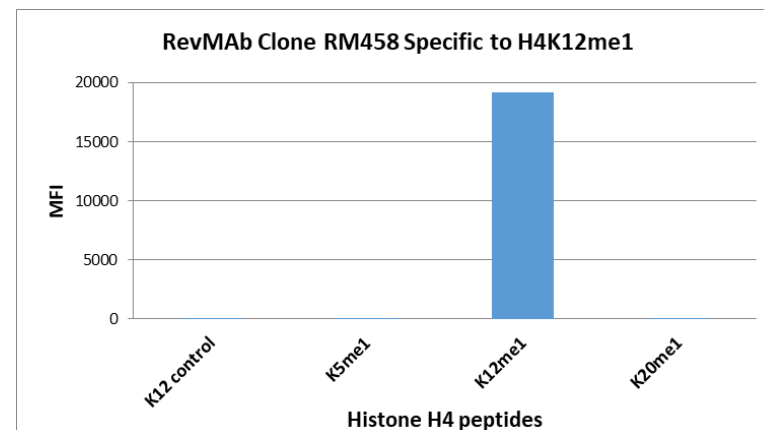
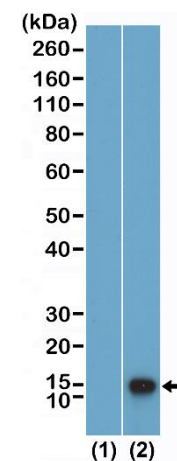


Certificate of Analysis

Product:	Rabbit Monoclonal Antibody Anti-Monomethyl-Histone H4 (Lys12) Rabbit Monoclonal Antibody, Clone RM458
Catalog No.:	31-1350-00
Lot No:	
Clone	RM458
Specificity	This antibody reacts to Histone H4 monomethylated at Lysine 12 (K12me1). No cross reactivity with non-modified Lysine 12, or other monomethylations in histone H4.
Application:	Western Blot, ELISA, Multiplex
Immunogen:	A monomethyl-peptide corresponding to monomethyl-Histone H4 (Lys12).
Purity:	Protein A affinity purified from an animal origin-free culture supernatant
Size:	100 µg
Concentration:	1.0 mg/mL
Buffer:	50% Glycerol/PBS with 1% BSA and 0.09% sodium azide
Usage:	WB: 0.01 µg/mL – 0.5 µg/mL; ELISA: 0.5 µg/mL - 1 µg/mL; Multiplex: 0.01 µg/mL – 2 µg/mL.
Storage and Stability:	Stable for 1 Year at -20.0°C from date of receipt.
Country of Origin:	U.S.A.
Intended Use:	For Research Use Only Not for Diagnostic or Therapeutic Use



RM458 specifically reacts to Histone H4 monomethylated at Lysine 12 (K12me1). No cross reactivity with non-modified Lysine 12, or other monomethylations in histone H4.



Western Blot of acid extracts of HeLa cells (2) and recombinant histone H4 (1), using RM458 at 0.02 µg/mL, showed a band of histone H4 monomethylated at Lysine 12 (K12me1) in HeLa cells.