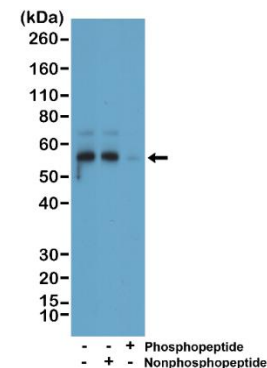
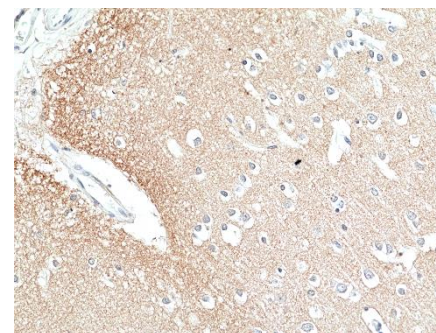


## Certificate of Analysis

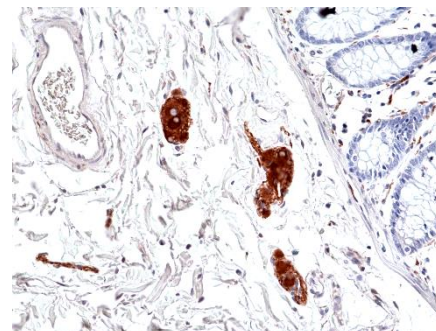
<b>Product:</b>	Rabbit Monoclonal Antibody Anti-Phospho-Tau (Ser396) Rabbit Monoclonal Antibody, Clone RM461
<b>Catalog No.:</b>	31-1353-00
<b>Clone:</b>	RM461
<b>Lot No:</b>	
<b>Specificity:</b>	This antibody reacts to Tau only when phosphorylated at Ser396. There is no cross-reactivity to Tau that is not phosphorylated. This antibody reacts to human, mouse or rat Phospho-Tau (Ser396).
<b>Application:</b>	Western Blot, Immunohistochemistry
<b>Immunogen:</b>	A phospho-peptide corresponding to human Tau (Ser396)
<b>Purity:</b>	Protein A affinity purified from an animal origin-free culture supernatant
<b>Size:</b>	100 µL
<b>Buffer:</b>	50% Glycerol/PBS with 1% BSA and 0.09% sodium azide
<b>Usage:</b>	WB: 1:1000 -1:2000 dilution; IHC: 1:50 – 1:200 dilution
<b>Storage and Stability:</b>	Stable for 1 Year at -20.0°C from date of receipt.
<b>Country of Origin:</b>	U.S.A.
<b>Intended Use:</b>	<b>For Research Use Only Not for Diagnostic or Therapeutic Use</b>



Western Blot of mouse brain tissue lysate, using Anti-Phospho-Tau (Ser396) rabbit monoclonal antibody (clone RM461) at a 1:1000 dilution. The phospho-specificity of RM461 was verified by peptide blocking using a phosphopeptide or non-phosphopeptide targeting residue Ser396.



Immunohistochemical staining of formalin fixed and paraffin embedded human brain tissue section, using Anti-Phospho-Tau (Ser396) rabbit monoclonal antibody (clone RM461) at a 1:50 dilution.



Immunohistochemical staining of formalin fixed and paraffin embedded human colon tissue section, using Anti-Phospho-Tau (Ser396) rabbit monoclonal antibody (clone RM461) at a 1:50 dilution.