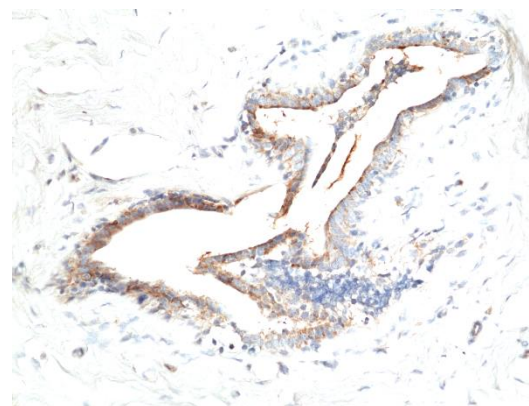
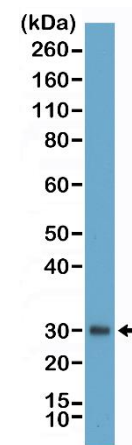
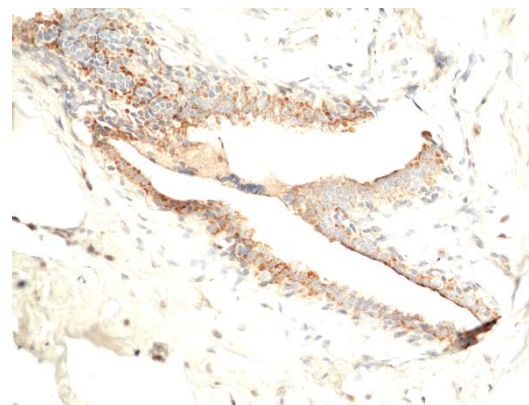


Certificate of Analysis

Product:	Rabbit Monoclonal Antibody Anti-Asprosin Rabbit Monoclonal Antibody, Clone RM463
Catalog No.:	31-1355-00
Clone:	RM463
Lot No:	
Specificity:	This antibody reacts to human Asprosin
Application:	Immunohistochemistry, Western Blot
Immunogen:	A recombinant full-length human Asprosin protein
Purity:	Protein A affinity purified from an animal origin-free culture supernatant.
Size:	100 µL
Buffer:	50% Glycerol/PBS with 1% BSA and 0.09% sodium azide
Usage:	IHC: 1:100 – 1:200 dilution; WB: 1:1000 - 1:25000 dilution.
Storage and Stability:	Stable for 1 Year at -20.0°C from date of receipt.
Country of Origin:	U.S.A.
Intended Use:	For Research Use Only Not for Diagnostic or Therapeutic Use



Immunohistochemical staining of formalin fixed and paraffin embedded human breast tissue sections using Anti-Asprosin antibody (RM463) at 1:100 dilution.



Western Blot of human plasma using anti-Asprosin rabbit monoclonal antibody (Clone RM463) at a 1:25000 dilution.