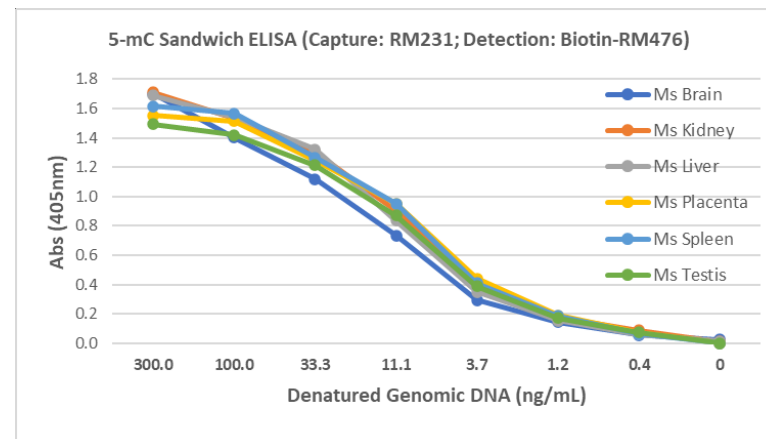


## Certificate of Analysis

<b>Product:</b>	Rabbit Monoclonal Antibody 5-Methylcytosine DNA Matched Antibody Pair
<b>Catalog No.:</b>	31-1110-MK
<b>Lot No.:</b>	RM231 Capture Ab RM476 Detection Ab
<b>Specificity</b>	This antibody pair detects 5-methylcytosine in denatured DNA (single strand DNA). It does not react to non-methylated cytosine and other modified cytosine (5-hmC, 5-caC, or 5-fC) in DNA.
<b>Application:</b>	Sandwich ELISA, or other Sandwich Assays.
<b>Components:</b>	<ol style="list-style-type: none"> <li>1) Capture Antibody: Anti-5-Methylcytosine Rabbit Monoclonal Antibody, Clone RM231, 50 µg at 1.0 mg/mL in 50% Glycerol/PBS with 0.09% sodium azide, without BSA or other carrier proteins.</li> <li>2) Detection Antibody: Biotin Anti-Adenine and Guanine Rabbit Monoclonal Antibody, Clone RM476, 25 µg at 1.0 mg/mL in 50% Glycerol/PBS with 1% BSA and 0.09% sodium azide;</li> </ol>
<b>Usage:</b>	ELISA: Capture Antibody 50ng/well – 200ng/well; Detection Antibody 0.1ug/mL – 0.5ug/mL
<b>Storage and Stability:</b>	Components Stable for 1 Year at -20.0°C from date of receipt.
<b>Country of Origin:</b>	U.S.A.
<b>Intended Use:</b>	<b>For Research Use Only Not for Diagnostic or Therapeutic Use</b>



Detection of 5-Methylcytosine in mouse different tissues genomic DNA. Sandwich ELISA using anti-5-Methylcytosine (clone RM231) as the capture antibody (50ng/well at 1ug/mL), and biotinylated anti-Adenine and Guanine (clone RM476) as the detection antibody (0.2ug/mL), followed by an AP conjugated streptavidin.