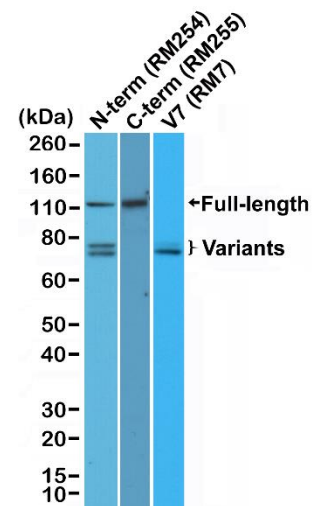
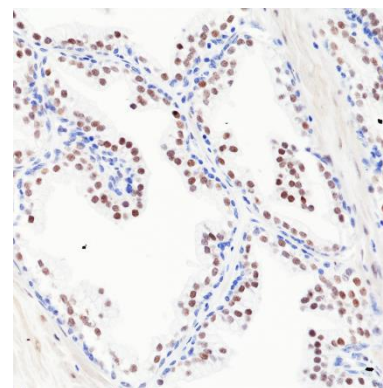


Product Datasheet

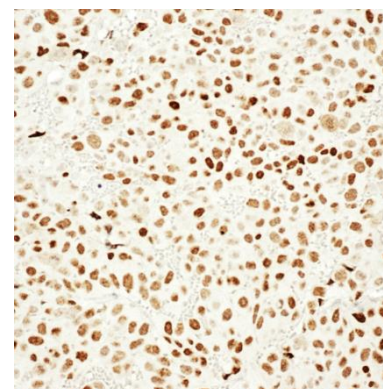
Product:	Rabbit Monoclonal Antibody Anti-Androgen Receptor (C-Term) Rabbit Monoclonal Antibody, Clone RM255
Catalog No.:	31-1136-00
Clone:	RM255
Specificity:	This antibody reacts to full length human Androgen Receptor. It may also react to mouse or rat Androgen Receptor, as predicted by immunogen homology.
Application:	Immunohistochemistry, Western Blot
Immunogen:	A peptide corresponding to the C-terminus of Androgen Receptor
Purity:	Protein A affinity purified from an animal origin-free culture supernatant.
Size:	100 uL
Buffer:	50% Glycerol/PBS with 1% BSA and 0.09% sodium azide
Usage:	IHC: 1:200 - 1:2000 dilution; WB: 1:200 - 1:1000 dilution.
Storage and Stability:	Stable for 1 Year at -20.0°C from date of receipt.
Country of Origin:	U.S.A.
Intended Use:	For Research Use Only Not for Diagnostic or Therapeutic Use



Western Blot analysis of 22RV1 whole cell lysates, using anti-Androgen Receptor (N-term) antibody (Clone RM254), anti-Androgen Receptor (C-term) antibody (Clone RM255), and anti-Androgen Receptor (ARv7 specific) antibody (Clone RM7), showed full length androgen receptor and splice variants expressed in 22RV1 cells.



Immunohistochemical staining of formalin fixed and paraffin embedded human prostate cancer tissue section using anti-Androgen Receptor (C-term) rabbit monoclonal antibody (Clone RM255) at a 1:200 dilution.



Immunohistochemical staining of formalin fixed and paraffin embedded mouse xenograft LNCaP95 tumor sections using anti-Androgen Receptor (C-term) rabbit monoclonal antibody (Clone RM255) at a 1:2000 dilution.

Image courtesy of Dr. Stephen Plymate, University of Washington, Washington USA