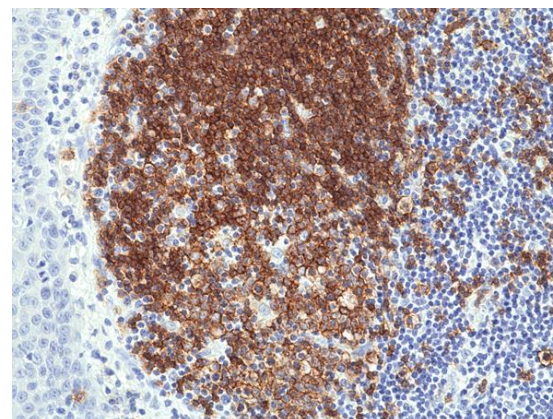


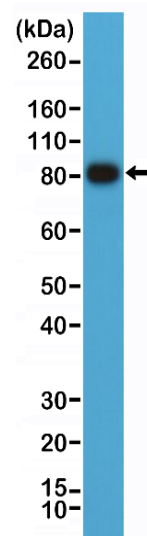
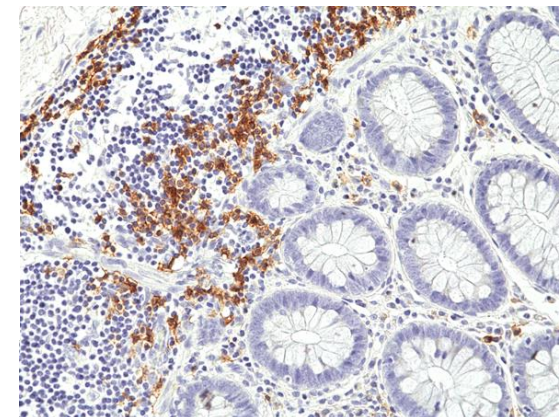
Certificate of Analysis

Product:	Rabbit Monoclonal Antibody Anti-CD19 Rabbit Monoclonal Antibody, Clone RM332
Catalog No.:	31-1219-00
Lot No:	
Clone:	RM332
Specificity:	This antibody reacts to the cytoplasmic domain of human CD19.
Application:	Immunohistochemistry, Western Blot
Immunogen:	A peptide corresponding to the C-terminus of human CD19.
Purity:	Protein A affinity purified from an animal origin-free culture supernatant
Size:	100 uL
Buffer:	50% Glycerol/PBS with 1% BSA and 0.09% sodium azide
Usage:	IHC: 1:500 -1:1000 dilution; WB: 1:1000 - 1:2000 dilution.
Storage and Stability:	Stable for 1 Year at -20.0°C from date of receipt.
Country of Origin:	U.S.A.
Intended Use:	For Research Use Only Not for Diagnostic or Therapeutic Use



Immunohistochemical staining of formalin fixed and paraffin embedded human Tonsil tissue section using anti-CD19 rabbit monoclonal antibody (Clone RM332) at a 1:1000 dilution.

Immunohistochemical staining of formalin fixed and paraffin embedded human Colon tissue section using anti-CD19 rabbit monoclonal antibody (Clone RM332) at a 1:1000 dilution.



Western Blot of Raji cell lysate using anti-CD19 rabbit monoclonal antibody (Clone RM332) at a 1:1000 dilution.