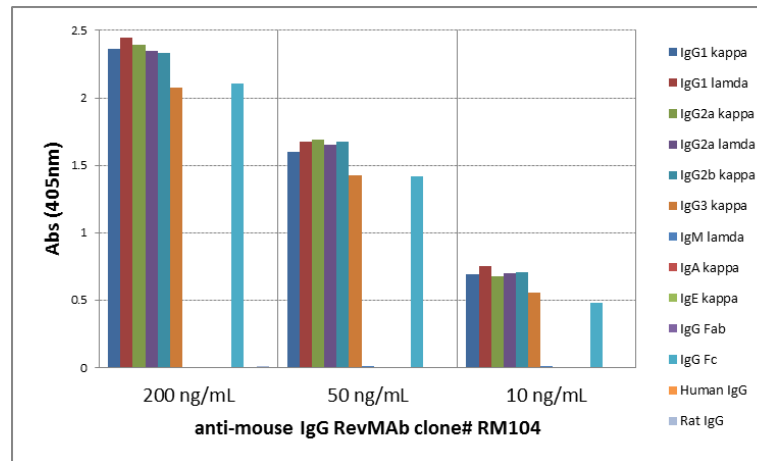
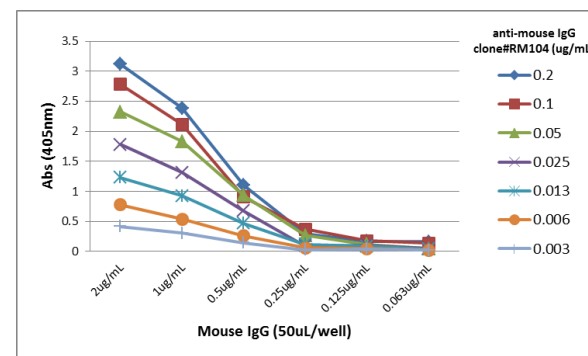


## Certificate of Analysis

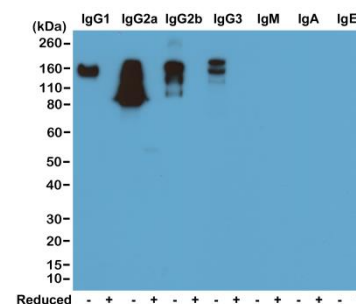
<b>Product:</b>	Rabbit Monoclonal Antibody  Biotin Anti-Mouse IgG Rabbit Monoclonal Antibody, Clone RM104
<b>Catalog No.:</b>	31-1001-02
<b>Lot No:</b>	
<b>Clone</b>	RM104
<b>Specificity</b>	This antibody reacts to the Fc region of all mouse IgG subclasses. No cross reactivity with mouse IgM, IgA, IgE, human IgG, and rat IgG. It may cross react to goat IgG.  The Fc region of RM104 has been engineered to eliminate Fc receptor binding.
<b>Application:</b>	ELISA, Western Blot (nonreduced).
<b>Immunogen:</b>	Mouse IgG
<b>Purity:</b>	Protein A affinity purified from an animal origin-free and protein-free culture supernatant
<b>Size:</b>	50 µg
<b>Concentration:</b>	1.0 mg/mL
<b>Buffer:</b>	50% Glycerol/PBS with 1% BSA and 0.09% sodium azide
<b>Usage:</b>	ELISA: 0.005ug/mL – 0.2ug/mL; WB: 0.1ug/mL – 0.5ug/mL
<b>Storage and Stability:</b>	Store at -20°C. 6 Months, Avoid Freeze and Thaw Cycles
<b>Country of Origin:</b>	U.S.A.
<b>Intended Use:</b>	<b>For Research Use Only Not for Diagnostic or Therapeutic Use</b>



ELISA of mouse immunoglobulins shows RM104 reacts to the Fc region of mouse IgG1, IgG2a, IgG2b, and IgG3; no cross reactivity with IgM, IgA, IgE, human or rat IgG. The plate was coated with 50 ng/well of different immunoglobulins. 200 ng/mL, 50 ng/mL, or 10 ng/mL of RM104 was used as the primary antibody. An alkaline phosphatase conjugated anti-rabbit IgG as the secondary antibody.



A titer ELISA of mouse IgG. The plate was coated with different amounts of mouse IgG. A serial dilution of RM104 was used as the primary antibody. An alkaline phosphatase conjugated anti-rabbit IgG as the secondary antibody.



Western blot of nonreduced(-) and reduced(+) mouse immunoglobulins (20ng/lane), using 0.2ug/mL of RevMAb clone RM104. This antibody reacts to nonreduced mouse IgG1, IgG2a, IgG2b, and IgG3. It showed no cross reactivity with IgM, IgA, or IgE.