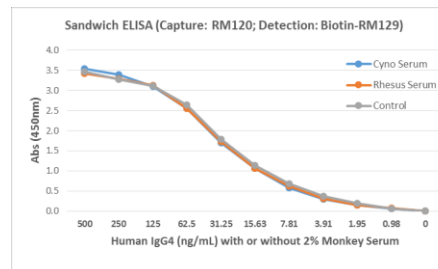
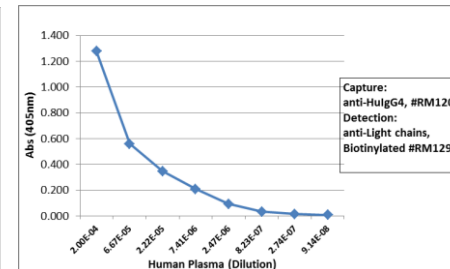


Certificate of Analysis

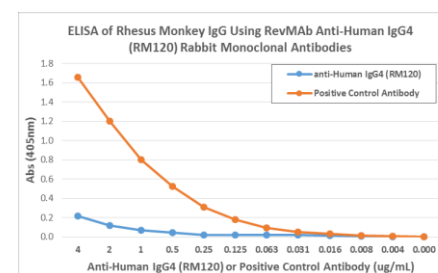
Product:	Rabbit Monoclonal Antibody Anti-Human IgG4 Rabbit Monoclonal Antibody, Clone RM120
Catalog No.:	31-1022-00
Lot No:	
Clone	RM120
Specificity	This antibody reacts to the heavy chain of human IgG4, RM120 does not cross react to any other IgG subclasses (IgG1, IgG2, or IgG3), and shows no cross reactivity to IgM, IgA, IgD, IgE. RM120 does not react to monkey (Cyno or Rhesus) IgG, mouse IgG, rat IgG, or goat IgG.
Application:	ELISA, Western Blot, Immunohistochemistry, Immunocytochemistry, Flow Cytometry.
Immunogen:	Peptide corresponding to the hinge region of Human IgG4
Purity:	Protein A affinity purified from an animal origin-free culture supernatant
Size:	100 µg
Concentration:	1.0 mg/mL
Buffer:	50% Glycerol/PBS with 1% BSA and 0.09% sodium azide
Usage:	ELISA: 50ng/well – 200ng/well (for Capture); 0.05µg/mL – 0.2µg/mL (for Detection); WB: 0.5µg/mL – 2µg/mL; IHC, ICC: 1µg/mL – 5 µg/mL; FC: 1µg/mL-4µg/mL.
Storage and Stability:	Stable for 1 Year at -20.0°C from date of receipt.
Country of Origin:	U.S.A.
Intended Use:	For Research Use Only Not for Diagnostic or Therapeutic Use



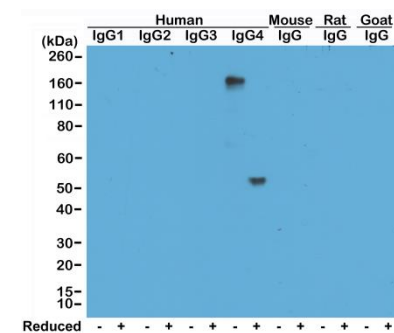
Detection of human IgG4 in monkey serum. Sandwich ELISA using RM120 as the capture antibody, and biotinylated anti-human light chains (κ or λ) antibody RM129 as the detection antibody, followed by a HRP conjugated streptavidin.



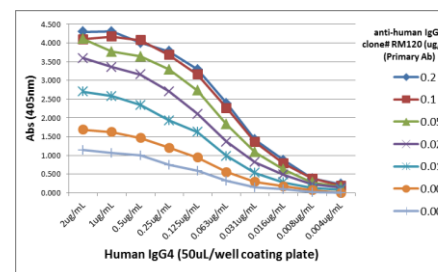
Sandwich ELISA using RM120 as the capture antibody, and biotinylated anti-human light chains (κ or λ) antibody RM129 as the detection antibody, followed by an AP conjugated streptavidin.



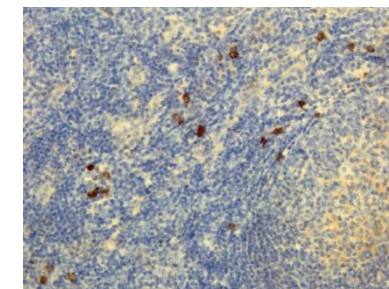
ELISA showing RM120 does not react to monkey IgG. The plate was coated with Rhesus monkey IgG. A serial dilution of RM120 and a monkey IgG binding antibody (positive control) was used as the detection antibody.



Western Blot of human, mouse, rat, and goat IgG shows RM120 reacts to human IgG4, in both whole molecule (~150kDa, non-reduced) and heavy chain (~50kDa, reduced) forms. No cross reactivity with other human IgG, mouse, rat, or goat IgG.



A titer ELISA using RM120. The plate was coated with different amounts of human IgG4. A serial dilution of RM120 was used as the primary antibody, followed by an alkaline phosphatase conjugated anti-rabbit IgG as the secondary antibody.



Immunohistochemical staining of formalin fixed and paraffin embedded human lymphoid tissue section using anti-human IgG4 rabbit monoclonal antibody (Clone RM120).