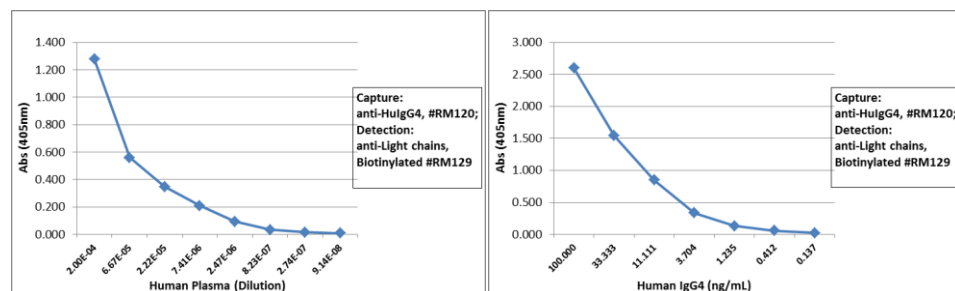
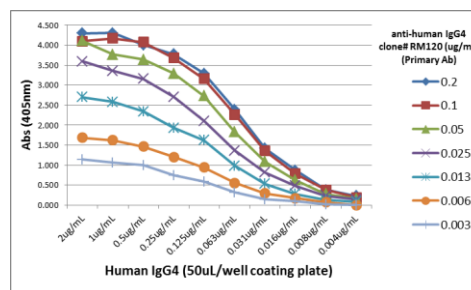


Certificate of Analysis

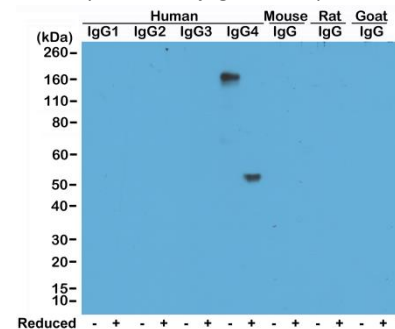
Product:	Rabbit Monoclonal Antibody Biotin Anti-Human IgG4 Rabbit Monoclonal Antibody, Clone RM120
Catalog No.:	31-1022-02
Lot No:	
Clone	RM120
Specificity	This antibody reacts to the heavy chain of human IgG4. No cross reactivity with human IgG1, IgG2, IgG3, IgM, IgA, IgD, IgE, mouse IgG, rat IgG, or goat IgG.
Application:	ELISA, Western Blot, Immunohistochemistry, Immunocytochemistry, Flow Cytometry.
Immunogen:	Peptide corresponding to the hinge region of Human IgG4
Purity:	Protein A affinity purified from an animal origin-free culture supernatant
Size:	50 µg
Concentration:	1.0 mg/mL
Buffer:	50% Glycerol/PBS with 1% BSA and 0.09% sodium azide
Usage:	ELISA: 50ng/well – 200ng/well (for Capture); 0.05µg/mL – 0.2µg/mL (for Detection); WB: 0.5µg/mL – 2µg/mL; IHC, ICC: 1µg/mL – 10µg/mL; FC: 1ug/mL-4ug/mL.
Storage and Stability:	Stable for 1 Year at -20.0°C from date of receipt.
Country of Origin:	U.S.A.
Intended Use:	For Research Use Only Not for Diagnostic or Therapeutic Use



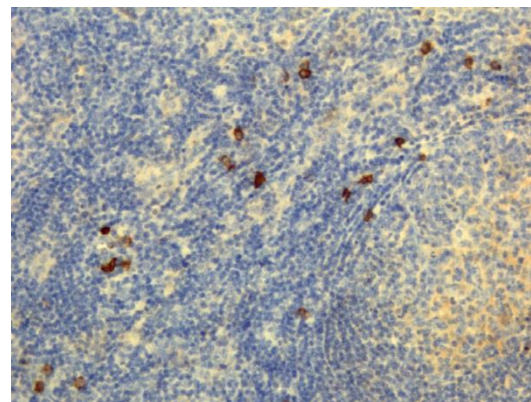
Sandwich ELISA using RM120 as the capture antibody, and Biotinylated anti-human light chains ($\kappa+\lambda$) antibody RM129 as the detection antibody, followed by an AP conjugated streptavidin.



A titer ELISA using RM120. The plate was coated with different amounts of human IgG4. A serial dilution of RM120 was used as the primary antibody. An alkaline phosphatase conjugated anti-rabbit IgG as the secondary antibody.



Western Blot of human, mouse, rat, and goat IgG shows RM120 reacts to human IgG4, in both whole molecule (~150kDa, non-reduced) and heavy chain (~50kDa, reduced) forms. No cross reactivity with other isotypes of human IgG, or mouse, rat, or goat IgG.



Immunohistochemistry of Human Lymphoid Tissue using Anti-Human IgG4 antibody RM120.