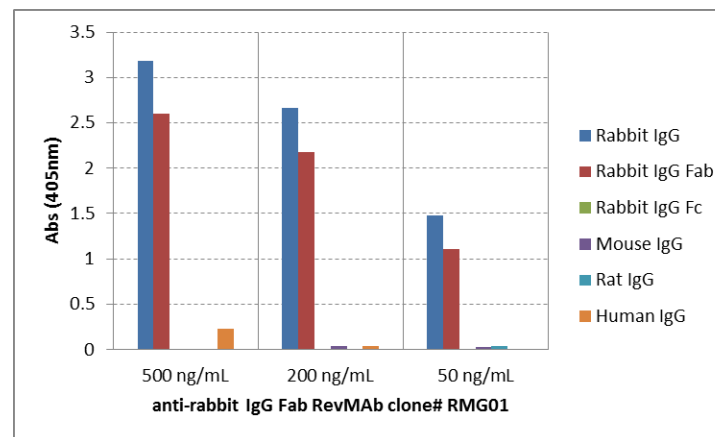
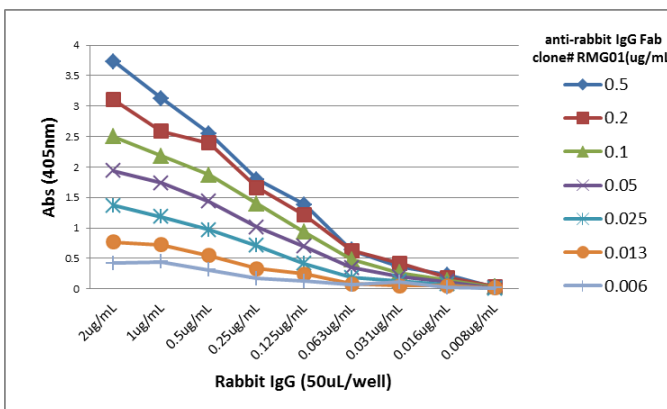


Certificate of Analysis

Product:	Goat Monoclonal Antibody Anti-Rabbit IgG Fab Goat Monoclonal Antibody, Clone RMG01
Catalog No.:	41-1014-00
Lot No:	
Clone	RMG01
Specificity	This antibody reacts to the Fab region of Rabbit IgG. No cross reactivity with human IgG, rat IgG, or mouse IgG.
Application:	ELISA, Western Blot (nonreduced).
Immunogen:	Rabbit IgG
Purity:	Protein G affinity purified from an animal origin-free culture supernatant
Size:	100 µg
Concentration:	1.0 mg/mL
Buffer:	50% Glycerol/PBS with 1% BSA and 0.09% sodium azide
Usage:	ELISA: 0.01ug/mL – 0.5ug/mL; WB: 0.1ug/mL – 0.5ug/mL
Storage and Stability:	Stable for 1 Year at -20.0°C from date of receipt.
Country of Origin:	U.S.A.
Intended Use:	For Research Use Only Not for Diagnostic or Therapeutic Use



ELISA of IgGs from different species, shows RMG01 reacts to the Fab region of rabbit IgG; no cross reactivity with human IgG, rat IgG, or mouse IgG. The plate was coated with 50 ng/well of different IgG. 500 ng/mL, 200 ng/mL, or 50 ng/mL of RMG01 was used as the primary antibody. An alkaline phosphatase conjugated anti-goat IgG as the secondary antibody.



A titer ELISA of rabbit IgG. The plate was coated with different amounts of rabbit IgG. A serial dilution of RMG01 was used as the primary antibody. An alkaline phosphatase conjugated anti-goat IgG as the secondary antibody.

Western blot of nonreduced(-) and reduced(+) rabbit IgG (20ng/lane), using 0.2ug/mL of RevMAb clone RMG01. This antibody reacts to nonreduced rabbit IgG (~150 kDa).

