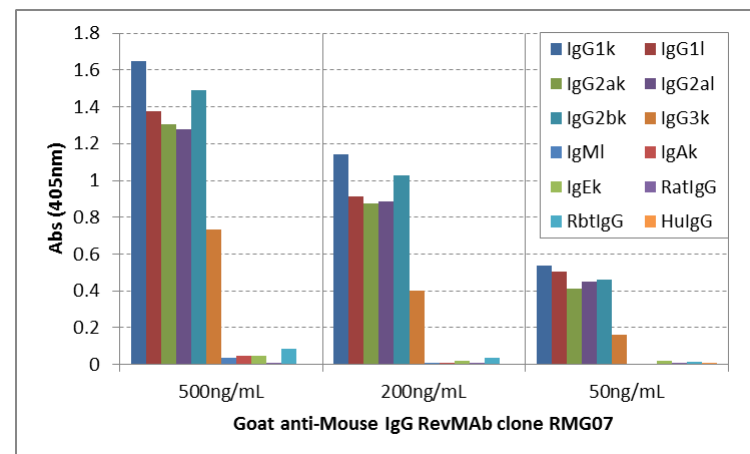
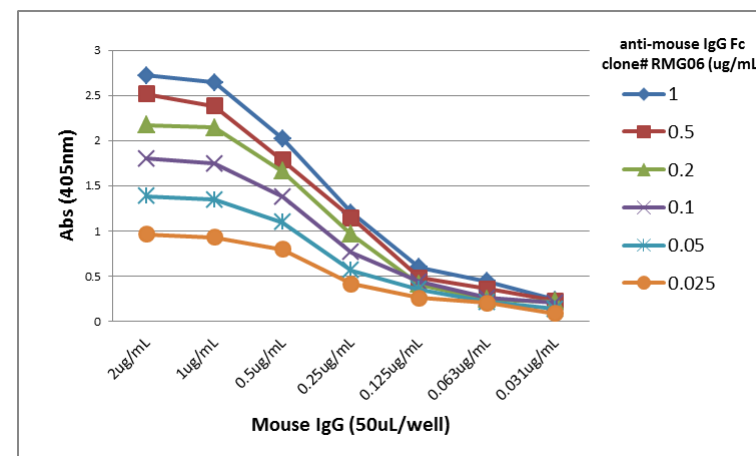


## Certificate of Analysis

<b>Product:</b>	Goat Monoclonal Antibody Anti-Mouse IgG, Clone RMG07
<b>Catalog No.:</b>	41-1045-00
<b>Lot No:</b>	
<b>Clone</b>	RMG07
<b>Specificity</b>	This antibody reacts to Mouse IgG, including IgG1, IgG2a, IgG2b, and IgG3. No cross reactivity with IgM, IgA, IgE, human IgG, rat IgG, or rabbit IgG.
<b>Application:</b>	ELISA
<b>Immunogen:</b>	Mouse IgG
<b>Purity:</b>	Protein G affinity purified from an animal origin-free culture supernatant
<b>Size:</b>	100 µg
<b>Concentration:</b>	1.0 mg/mL
<b>Buffer:</b>	50% Glycerol/PBS with 1% BSA and 0.09% sodium azide
<b>Usage:</b>	ELISA: 0.05ug/mL – 1ug/mL;
<b>Storage and Stability:</b>	Stable for 1 Year at -20.0°C from date of receipt.
<b>Country of Origin:</b>	U.S.A.
<b>Intended Use:</b>	<b>For Research Use Only Not for Diagnostic or Therapeutic Use</b>



ELISA of mouse immunoglobulins shows RMG07 reacts to mouse IgG1, IgG2a, IgG2b, and IgG3; no cross reactivity with IgM, IgA, IgE, human IgG, rat IgG, and rabbit IgG. The plate was coated with 50 ng/well of different immunoglobulins. 500 ng/mL, 200 ng/mL, or 50 ng/mL of RMG07 was used as the primary antibody. An alkaline phosphatase conjugated anti-goat IgG as the secondary antibody.



A titer ELISA of mouse IgG. The plate was coated with different amounts of mouse IgG. A serial dilution of RMG07 was used as the primary antibody. An alkaline phosphatase conjugated anti-goat IgG as the secondary antibody.