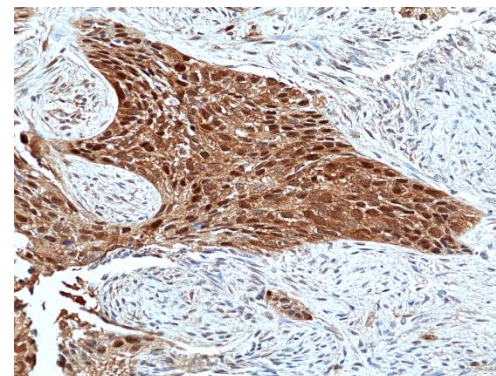
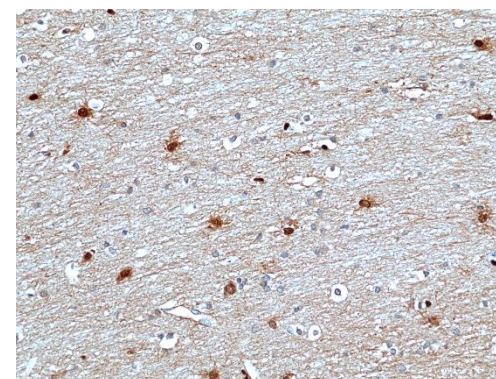


Certificate of Analysis

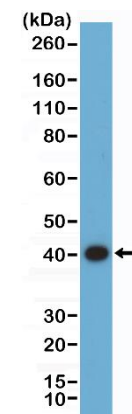
Product:	Rabbit Monoclonal Antibody Anti-Erk2 (p42-MAPK) Rabbit Monoclonal Antibody, Clone RM483
Catalog No.:	31-1375-00
Lot No.:	
Clone:	RM483
Specificity:	This antibody reacts to human Erk2 (p42-MAPK). This antibody may also react to mouse or rat Erk2 as predicted by immunogen homology.
Application:	Immunohistochemistry, Western Blot
Immunogen:	A peptide corresponding to the C-terminus of human Erk2 (p42-MAPK).
Purity:	Protein A affinity purified from an animal origin-free culture supernatant
Size:	100 µL
Buffer:	50% Glycerol/PBS with 1% BSA and 0.09% sodium azide
Usage:	IHC: 1:100 -1:200 dilution; WB: 1:1000 - 1:2000 dilution.
Storage and Stability:	Stable for 1 Year at -20.0°C from date of receipt.
Country of Origin:	U.S.A.
Intended Use:	For Research Use Only Not for Diagnostic or Therapeutic Use



Immunohistochemical staining of formalin fixed and paraffin embedded human Lung Squamous Carcinoma tissue sections using Anti-Erk2 antibody (RM483) at 1:100 dilution.



Immunohistochemical staining of formalin fixed and paraffin embedded human Brain tissue sections using Anti-Erk2 antibody (RM483) at 1:100 dilution.



Western Blot of 293 cell lysate using Anti-Erk2 antibody (RM483) at 1:2000 dilution.