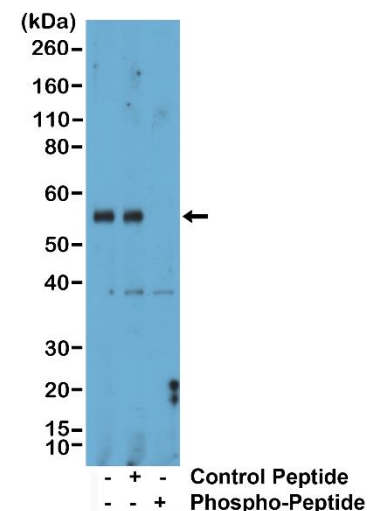


Certificate of Analysis

Product:	Rabbit Monoclonal Antibody Anti-Phospho-Smad1 (Ser463/465)/ Smad5 (Ser463/465)/ Smad9 (Ser465/467) Rabbit Monoclonal Antibody, Clone RM487
Catalog No.:	31-1379-00
Lot No.:	
Clone:	RM487
Specificity:	This antibody reacts to Smad1 and Smad5 when phosphorylated at Ser463/465 and Smad9 (Smad8) when phosphorylated at Ser465/467. There is no cross-reactivity to Smad1, Smad5, or Smad9 that are not phosphorylated. This antibody reacts to human, mouse or rat Phospho-Smad1 (Ser463/465)/ Smad5 (Ser463/465)/ Smad9 (Ser465/467).
Application:	Western Blot
Immunogen:	A phospho-peptide corresponding to human Phospho-Smad1 (Ser463/465)/ Smad5 (Ser463/465)/ Smad9 (Ser465/467)
Purity:	Protein A affinity purified from an animal origin-free culture supernatant
Size:	100 µL
Buffer:	50% Glycerol/PBS with 1% BSA and 0.09% sodium azide
Usage:	WB: 1:1000 -1:2000 dilution;
Storage and Stability:	Stable for 1 Year at -20.0°C from date of receipt.
Country of Origin:	U.S.A.
Intended Use:	For Research Use Only Not for Diagnostic or Therapeutic Use



Western Blot of mouse liver tissue lysate, using Anti-Phospho-Smad1 (Ser463/465)/ Smad5 (Ser463/465)/ Smad9 (Ser465/467) rabbit monoclonal antibody (clone RM487) at a 1:1000 dilution. The phospho-specificity of RM487 was verified by peptide blocking using a control nonphospho-peptide or phosphor-peptide targeting residue Ser463/465 of Smad1 and Smad5 and residue Ser465/467 of Smad9.