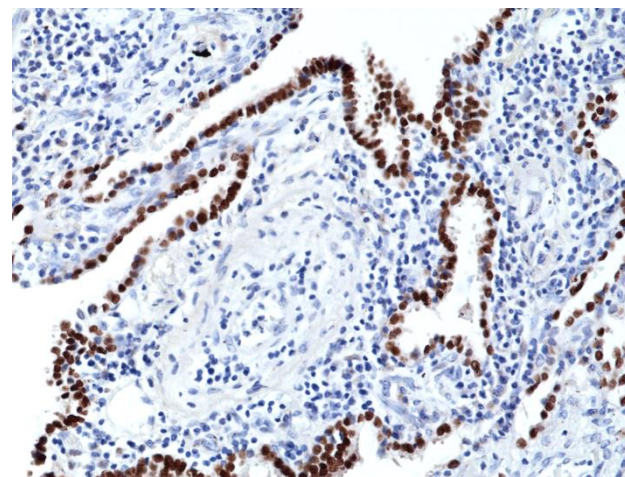
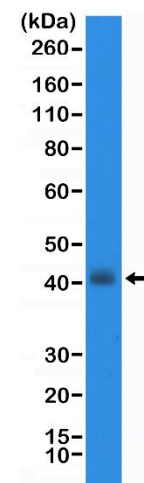


## Specifications sheet

<b>Product:</b>	Rabbit Monoclonal Antibody Anti-NKX2-1 (Homeobox protein Nkx-2.1) Rabbit Monoclonal Antibody, Clone RM373
<b>Catalog No.:</b>	31-1259-00-L
<b>Clone:</b>	RM373
<b>Specificity:</b>	This antibody reacts to human NKX2-1 (Homeobox protein Nkx-2.1). It may also react to mouse and rat NKX2-1, as predicted by immunogen homology.
<b>Application:</b>	Immunohistochemistry, Western Blot
<b>Immunogen:</b>	A peptide corresponding to the N-terminus of human Homeobox protein Nkx-2.1
<b>Purity:</b>	Protein A affinity purified from an animal origin-free culture supernatant
<b>Size:</b>	100µL
<b>Buffer:</b>	50% Glycerol/PBS with 1% BSA and 0.09% sodium azide
<b>Usage:</b>	IHC: 1:500 -1:1000 dilution; WB: 1:1000 - 1:20000 dilution.
<b>Storage and Stability:</b>	Stable for 1 Year at -20.0°C from date of receipt.
<b>Country of Origin:</b>	U.S.A.
<b>Intended Use:</b>	<b>For Research Use Only Not for Diagnostic or Therapeutic Use</b>



Immunohistochemical staining of formalin fixed and paraffin embedded human lung cancer tissue section using anti-NKX2-1 rabbit monoclonal antibody (Clone RM373) at a 1:500 dilution.



Western Blot of TT cell lysate using anti-NKX2-1 rabbit monoclonal antibody (Clone RM373) at a 1:20000 dilution.