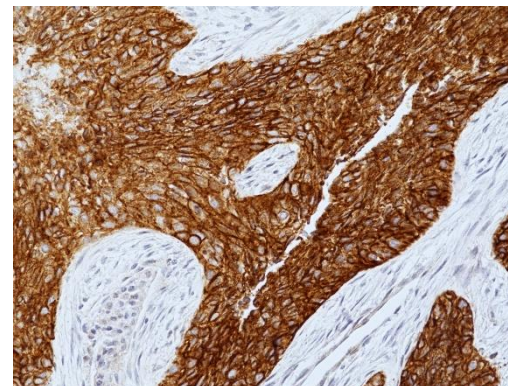
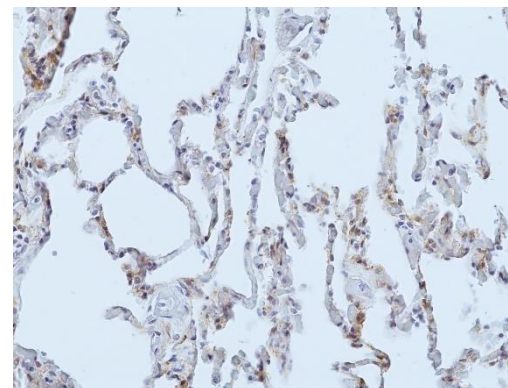


Specifications Sheet

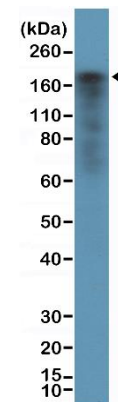
Product:	Rabbit Monoclonal Antibody Anti-EGFR (EGF Receptor) Rabbit Monoclonal Antibody, Clone RM493
Catalog No.:	31-1385-00
Clone:	RM493
Specificity:	This antibody reacts to human EGFR (EGF Receptor)
Application:	Immunohistochemistry, Western Blot
Immunogen:	Recombinant protein of human EGFR extracellular domain.
Purity:	Protein A affinity purified from an animal origin-free culture supernatant
Size:	100 µL
Buffer:	50% Glycerol/PBS with 1% BSA and 0.09% sodium azide
Usage:	IHC: 1:100 -1:1000 dilution. WB: 1:1000 - 1:10000 dilution.
Storage and Stability:	Stable for 1 Year at -20.0°C from date of receipt.
Country of Origin:	U.S.A.
Intended Use:	For Research Use Only Not for Diagnostic or Therapeutic Use



Immunohistochemical staining of formalin fixed and paraffin embedded human Lung Cancer tissue sections using Anti-EGFR Rabbit Monoclonal Antibody (Clone RM493) at 1:100 dilution.



Immunohistochemical staining of formalin fixed and paraffin embedded human Lung tissue sections using Anti-EGFR Rabbit Monoclonal Antibody (Clone RM493) at 1:100 dilution.



Western Blot of A431 cell lysate, using Anti-EGFR Rabbit Monoclonal Antibody (Clone RM493) at 1:1000 dilution