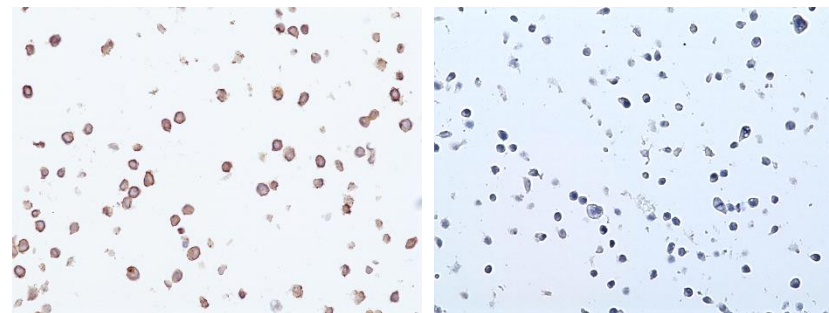
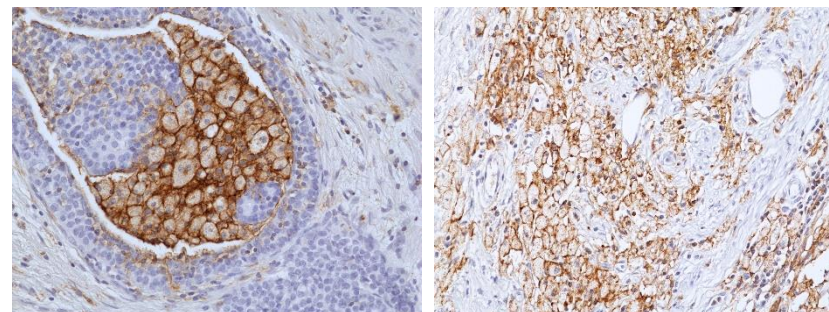


Specifications Sheet

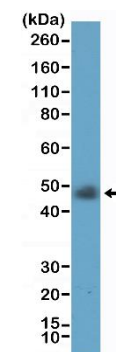
Product:	Rabbit Monoclonal Antibody Anti-LAIR1 Rabbit Monoclonal Antibody, Clone RM498
Catalog No.:	31-1390-00
Clone:	RM498
Specificity:	This antibody reacts to human LAIR-1 (Leukocyte-associated immunoglobulin-like receptor 1).
Application:	Immunohistochemistry, Western Blot
Immunogen:	Recombinant protein of human LAIR-1 extracellular domain.
Purity:	Protein A affinity purified from an animal origin-free culture supernatant
Size:	100 µL
Buffer:	50% Glycerol/PBS with 1% BSA and 0.09% sodium azide
Usage:	IHC: 1:100 -1:500 dilution. WB: 1:1000 - 1:2500 dilution.
Storage and Stability:	Stable for 1 Year at -20.0°C from date of receipt.
Country of Origin:	U.S.A.
Intended Use:	For Research Use Only Not for Diagnostic or Therapeutic Use



Immunohistochemical staining of formalin fixed and paraffin embedded THP-1 (left) and HeLa cells using Anti-LAIR1 Rabbit Monoclonal Antibody (Clone RM498) at 1:500 dilution.



Immunohistochemical staining of formalin fixed and paraffin embedded human Breast Cancer (left) and Stomach Cancer tissue sections using Anti-LAIR1 Rabbit Monoclonal Antibody (Clone RM498) at 1:100 dilution.



Western Blot of THP-1 cell lysate, using Anti-LAIR1 Rabbit Monoclonal Antibody (Clone RM498) at 1:2500 dilution