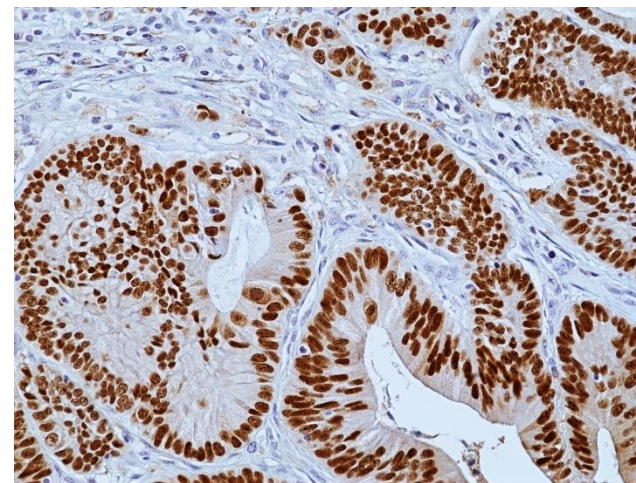


Specifications Sheet

Product:	Rabbit Monoclonal Antibody Anti-CDX2 Rabbit Monoclonal Antibody, Clone RM495
Catalog No.:	31-1387-00
Clone:	RM495
Specificity:	This antibody reacts to human CDX2.
Application:	Immunohistochemistry
Immunogen:	Recombinant human CDX2 protein.
Purity:	Protein A affinity purified from an animal origin-free culture supernatant
Size:	100 µL
Buffer:	50% Glycerol/PBS with 1% BSA and 0.09% sodium azide
Usage:	IHC: 1:100 -1:200 dilution
Storage and Stability:	Stable for 1 Year at -20.0°C from date of receipt.
Country of Origin:	U.S.A.
Intended Use:	For Research Use Only Not for Diagnostic or Therapeutic Use



Immunohistochemical staining of formalin fixed and paraffin embedded human colon cancer tissue sections using anti-CDX2 rabbit monoclonal antibody (clone RM495) at a 1:100 dilution.