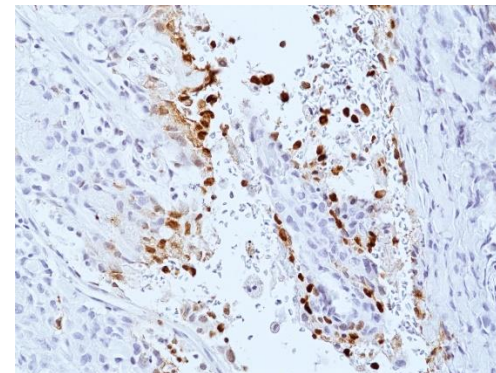
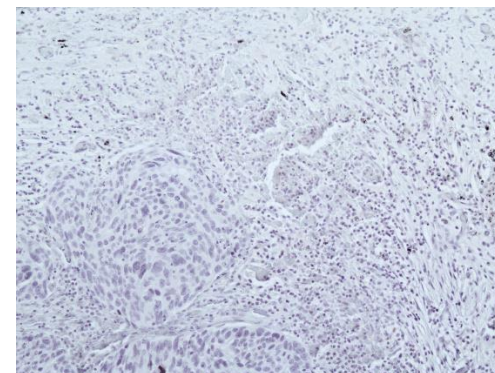


Specifications Sheet

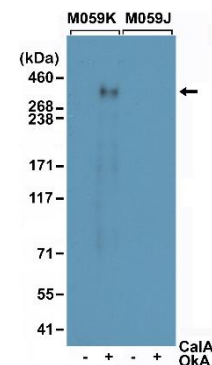
Product:	Rabbit Monoclonal Antibody Anti-Phospho-DNA-PKcs (Ser2056) Rabbit Monoclonal Antibody, Clone RM500
Catalog No.:	31-1392-00
Clone:	RM500
Specificity:	This antibody reacts to DNA-PKcs (DNA-PK catalytic subunit) when phosphorylated at Ser2056. There is no cross-reactivity to DNA-PKcs that are not phosphorylated.
Application:	Immunohistochemistry, Western Blot.
Immunogen:	A phospho-peptide corresponding to human Phospho-DNA-PKcs (Ser2056)
Purity:	Protein A affinity purified from an animal origin-free culture supernatant
Size:	100 µL
Buffer:	50% Glycerol/PBS with 1% BSA and 0.09% sodium azide
Usage:	IHC: 1:100 -1:500 dilution; WB: 1:50 - 1:200 dilution.
Storage and Stability:	Stable for 1 Year at -20.0°C from date of receipt.
Country of Origin:	U.S.A.
Intended Use:	For Research Use Only Not for Diagnostic or Therapeutic Use



Immunohistochemical staining of formalin fixed and paraffin embedded human Lung Cancer with radiotherapy, using Phospho-DNA-PKcs (Ser2056) Rabbit Monoclonal Antibody (Clone RM500) at a 1:500 dilution.



Immunohistochemical staining of formalin fixed and paraffin embedded human Lung Cancer without radiotherapy, using Phospho-DNA-PKcs (Ser2056) Rabbit Monoclonal Antibody (Clone RM500) at a 1:100 dilution.



Western Blot of lysates of M059K (DNA-PKcs positive) and M059J (DNA-PKcs negative) cells, untreated (-), or treated with Calyculin A (CalA) and Okadaic acid (OkA), using Phospho-DNA-PKcs (Ser2056) Rabbit Monoclonal Antibody (Clone RM500) at a 1:50 dilution.