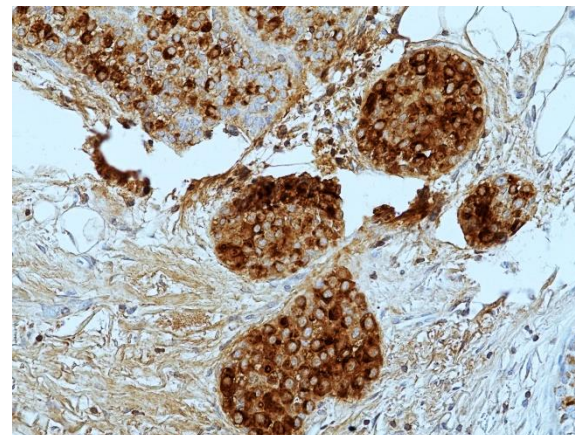
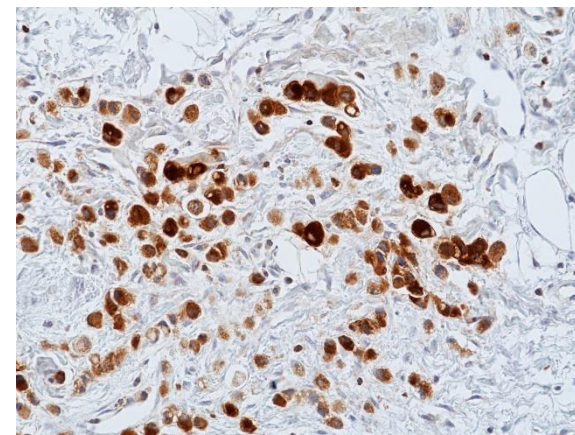


Specifications Sheet

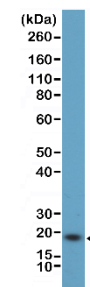
Product:	Rabbit Monoclonal Antibody Anti-GCDFP-15 Rabbit Monoclonal Antibody, Clone RM504
Catalog No.:	31-1396-00
Clone:	RM504
Specificity:	This antibody reacts to human GCDFP-15 (Gross cystic disease fluid protein 15) (Prolactin-inducible protein).
Application:	Immunohistochemistry, Western Blot
Immunogen:	A peptide corresponding to the N-terminus of human GCDFP-15.
Purity:	Protein A affinity purified from an animal origin-free culture supernatant
Size:	100 µL
Buffer:	50% Glycerol/PBS with 1% BSA and 0.09% sodium azide
Usage:	IHC: 1:100 -1:200 dilution; WB: 1:1000 - 1:2000 dilution.
Storage and Stability:	Stable for 1 Year at -20.0°C from date of receipt.
Country of Origin:	U.S.A.
Intended Use:	For Research Use Only Not for Diagnostic or Therapeutic Use



Immunohistochemical staining of formalin fixed and paraffin embedded human Breast Ductal Cancer tissue sections using Anti-GCDFP-15 Rabbit Monoclonal Antibody (RM504) at 1:100 dilution.



Immunohistochemical staining of formalin fixed and paraffin embedded human Breast Lobular Cancer tissue sections using Anti-GCDFP-15 Rabbit Monoclonal Antibody (RM504) at 1:100 dilution.



Western Blot of T47D cell lysate using Anti-GCDFP-15 Rabbit Monoclonal Antibody (RM504) at 1:1000 dilution.