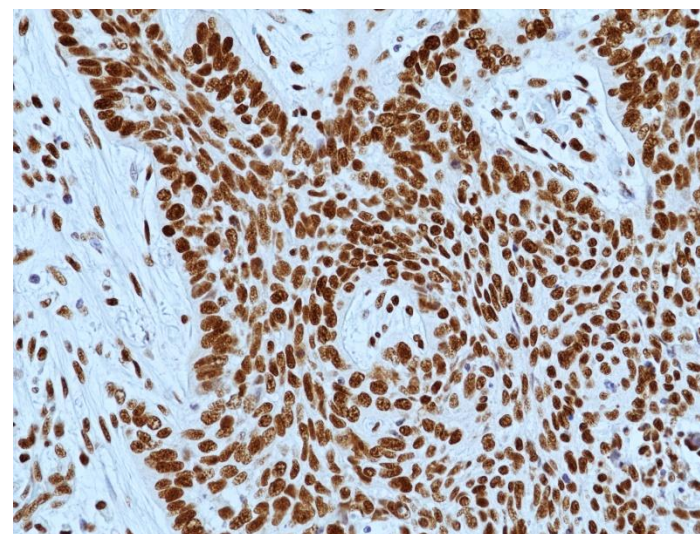
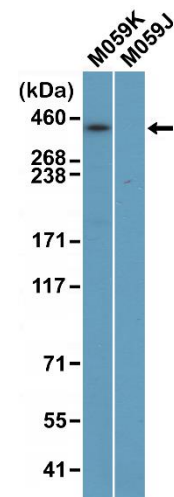


Specifications Sheet

Product:	Rabbit Monoclonal Antibody Anti-DNA-PKcs Rabbit Monoclonal Antibody, Clone RM505
Catalog No.:	31-1397-00
Clone:	RM505
Specificity:	This antibody reacts to human DNA-PKcs (DNA-PK catalytic subunit).
Application:	Immunohistochemistry, Western Blot
Immunogen:	A peptide corresponding to the C-terminus of human DNA-PKcs (DNA-PK catalytic subunit).
Purity:	Protein A affinity purified from an animal origin–free culture supernatant
Size:	100 µL
Buffer:	50% Glycerol/PBS with 1% BSA and 0.09% sodium azide
Usage:	IHC: 1:100 -1:200 dilution; WB: 1:1000 - 1:2500 dilution.
Storage and Stability:	Stable for 1 Year at -20.0°C from date of receipt.
Country of Origin:	U.S.A.
Intended Use:	For Research Use Only Not for Diagnostic or Therapeutic Use



Immunohistochemical staining of formalin fixed and paraffin embedded human Lung Cancer tissue sections using Anti-DNA-PKcs Rabbit Monoclonal Antibody (RM505) at 1:100 dilution.



Western Blot of lysates of M059K (DNA-PKcs positive) and M059J (DNA-PKcs negative) cells, using Anti-DNA-PKcs Rabbit Monoclonal Antibody (RM505) at 1:2500 dilution.