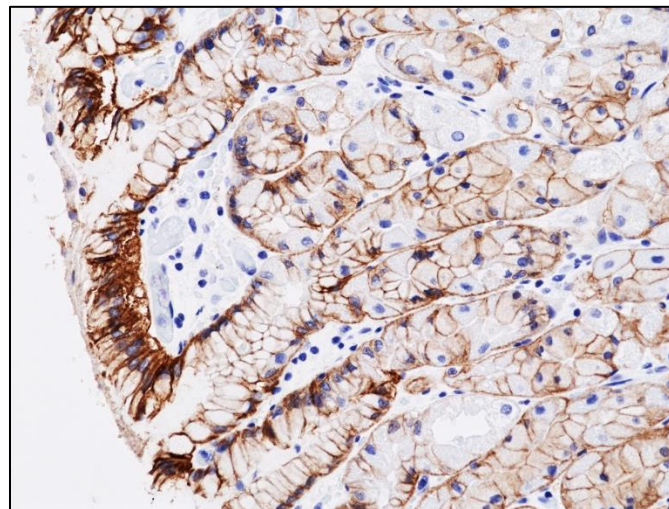
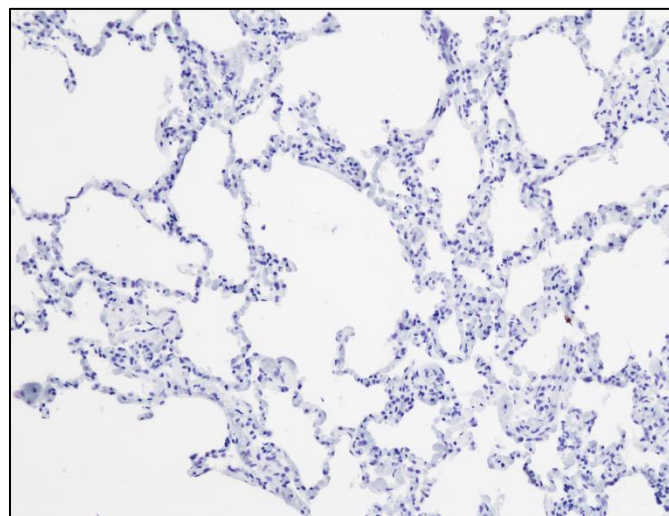


## Specifications Sheet

<b>Product:</b>	Rabbit Monoclonal Antibody Anti-CLDN 18.2 Rabbit Monoclonal Antibody, Clone RM510
<b>Catalog No.:</b>	31-1402-00
<b>Clone:</b>	RM510
<b>Specificity:</b>	This antibody reacts to human CLDN18.2 (Claudin 18.2) (Isoform A2 of Claudin-18). This antibody may also react to mouse or rat CLDN18.2, as predicted by immunogen homology.
<b>Application:</b>	Immunohistochemistry
<b>Immunogen:</b>	A peptide corresponding to residues of human CLDN18.2 (Claudin 18.2) (Isoform A2 of Claudin-18).
<b>Purity:</b>	Protein A affinity purified from an animal origin-free culture supernatant
<b>Size:</b>	100 µL
<b>Buffer:</b>	50% Glycerol/PBS with 1% BSA and 0.09% sodium azide
<b>Usage:</b>	IHC: 1:100 -1:200 dilution
<b>Storage and Stability:</b>	Stable for 1 Year at -20.0°C from date of receipt.
<b>Country of Origin:</b>	U.S.A.
<b>Intended Use:</b>	<b>For Research Use Only Not for Diagnostic or Therapeutic Use</b>



Immunohistochemical staining of formalin fixed and paraffin embedded human Stomach (CLDN18.2 positive) tissue sections using Anti-CLDN18.2 Rabbit Monoclonal Antibody (RM510) at 1:100 dilution.



Immunohistochemical staining of formalin fixed and paraffin embedded human Lung (CLDN18.2 negative) tissue sections using Anti-CLDN18.2 Rabbit Monoclonal Antibody (RM510) at 1:100 dilution.