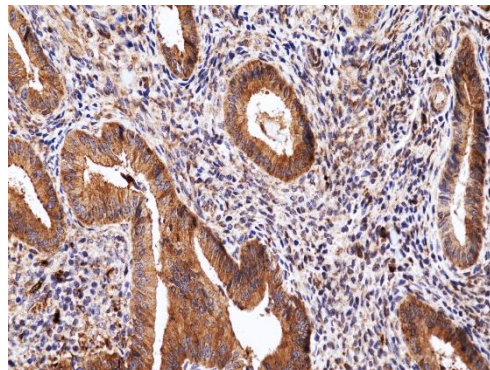
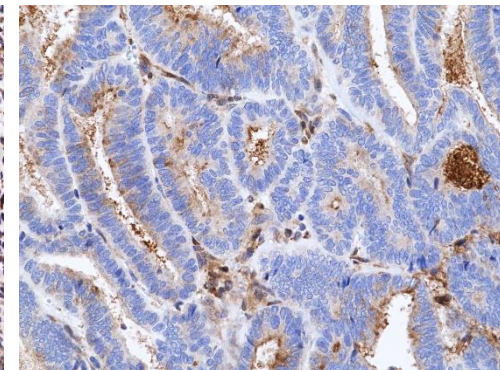


## Specifications Sheet

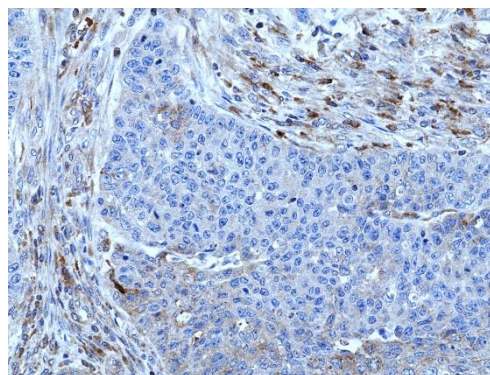
|                               |  |
|-------------------------------|--|
| <b>Product:</b>               | Rabbit Monoclonal Antibody<br>Anti-PTEN Rabbit Monoclonal Antibody, Clone RM511  |
| <b>Catalog No.:</b>           | 31-1403-00   |
| <b>Clone:</b>                 | RM511  |
| <b>Specificity:</b>           | This antibody reacts to human PTEN<br>(Phosphatidylinositol 3,4,5-trisphosphate 3-phosphatase and dual-specificity protein phosphatase PTEN) |
| <b>Application:</b>           | Immunohistochemistry (IHC) (optimized for the detection of endometrial carcinomas.)  |
| <b>Immunogen:</b>             | A peptide corresponding to residues at the C-terminus of human PTEN  |
| <b>Purity:</b>                | Protein A affinity purified from an animal origin-free culture supernatant   |
| <b>Size:</b>                  | 100 µL   |
| <b>Buffer:</b>                | 50% Glycerol/PBS with 1% BSA and 0.09% sodium azide  |
| <b>Usage:</b>                 | IHC: 1:100 -1:200 dilution;  |
| <b>Storage and Stability:</b> | Stable for 1 Year at -20.0°C from date of receipt.   |
| <b>Country of Origin:</b>     | U.S.A.   |
| <b>Intended Use:</b>          | <b>For Research Use Only Not for Diagnostic or Therapeutic Use</b>   |



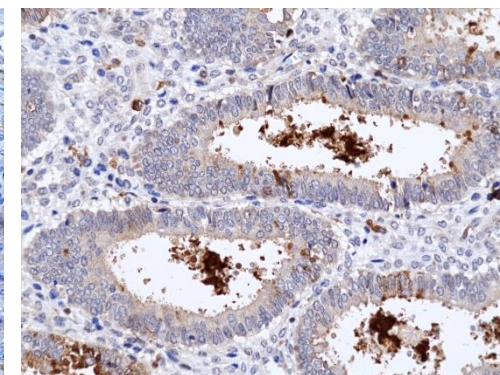
Endometrium (Proliferative)



Endometrium Adenocarcinoma (Stage IB)



Endometrium Adenocarcinoma (Stage III)



Endometrium Neoplasia (Stage IA)

Immunohistochemical staining of formalin fixed and paraffin embedded human Endometrium normal and tumor tissues sections using Anti-PTEN Rabbit Monoclonal Antibody (RM511) at 1:100 dilution for 1hr at room temperature.