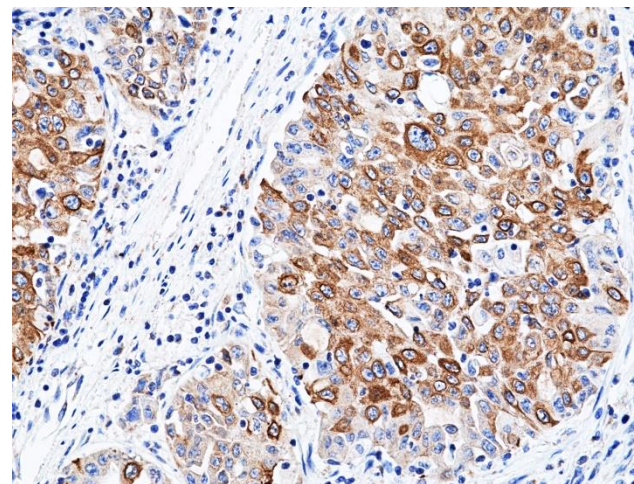
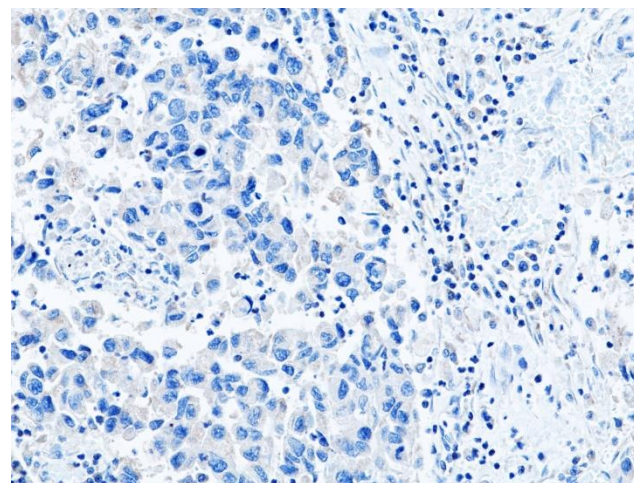


Specifications Sheet

| | |
|-------------------------------|---|
| Product: | Rabbit Monoclonal Antibody Anti-ALK Rabbit Monoclonal Antibody, Clone RM512 |
| Catalog No.: | 31-1404-00 |
| Clone: | RM512 |
| Specificity: | This antibody reacts to human total ALK protein including ALK fusion proteins |
| Application: | Immunohistochemistry |
| Immunogen: | A recombinant protein corresponding to the C-terminus of human ALK (Anaplastic lymphoma kinase) |
| Purity: | Protein A affinity purified from an animal origin-free culture supernatant |
| Size: | 100 µL |
| Buffer: | 50% Glycerol/PBS with 1% BSA and 0.09% sodium azide |
| Usage: | IHC: 1:100 -1:200 dilution. |
| Storage and Stability: | Stable for 1 Year at -20°C from date of receipt. |
| Country of Origin: | U.S.A. |
| Intended Use: | For Research Use Only Not for Diagnostic or Therapeutic Use |



Immunohistochemical staining of formalin fixed and paraffin embedded ALK positive human Lung Adenocarcinoma, stained with anti-ALK rabbit monoclonal antibody clone RM512 at 1:100 dilution.



Immunohistochemical staining of formalin fixed and paraffin embedded ALK negative human Lung Adenocarcinoma, stained with anti-ALK rabbit monoclonal antibody clone RM512 at 1:100 dilution.