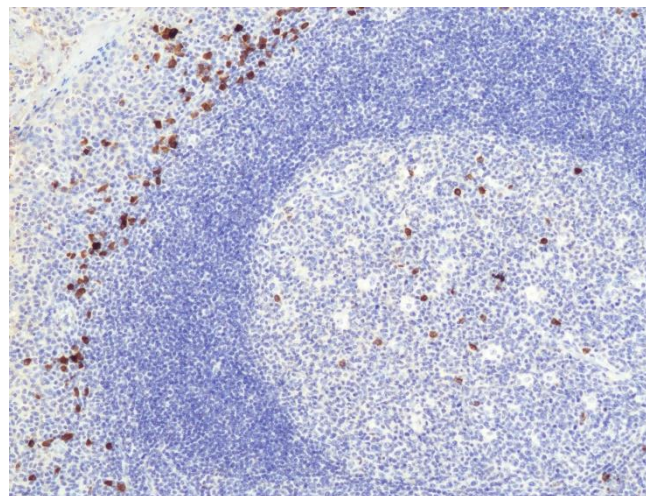
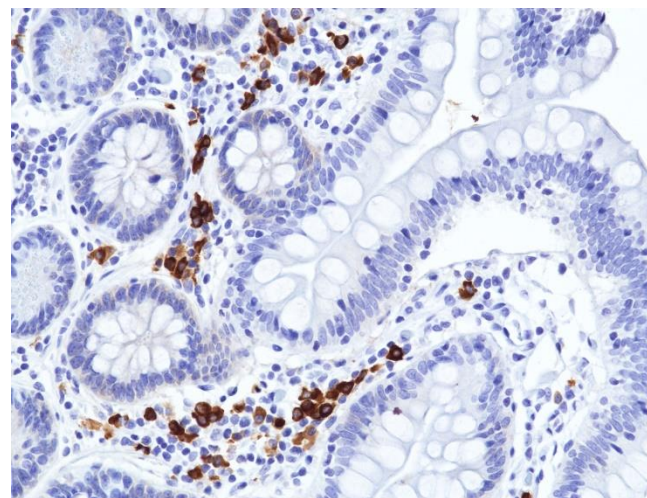


Specifications Sheet

| | |
|-------------------------------|--|
| Product: | Rabbit Monoclonal Antibody Anti-Human IgA ($\alpha 1$ & $\alpha 2$) Rabbit Monoclonal Antibody, Clone RM513 |
| Catalog No.: | 31-1405-00 |
| Clone | RM513 |
| Specificity | This antibody reacts to human IgA, including both IgA1 and IgA2. No cross reactivity with human IgG, IgM, IgD, or IgE. |
| Application: | Immunohistochemistry |
| Immunogen: | Human IgA from human plasma |
| Purity: | Protein A affinity purified from an animal origin-free culture supernatant |
| Size: | 100 μ L |
| Buffer: | 50% Glycerol/PBS with 1% BSA and 0.09% sodium azide |
| Usage: | IHC: 1:100 – 1:200 |
| Storage and Stability: | Stable for 1 Year at -20°C from date of receipt. |
| Country of Origin: | U.S.A. |
| Intended Use: | For Research Use Only Not for Diagnostic or Therapeutic Use |



Immunohistochemical staining of formalin fixed and paraffin embedded human tonsil tissue, stained with anti-Human IgA rabbit monoclonal antibody clone RM513 at 1:100 dilution.



Immunohistochemical staining of formalin fixed and paraffin embedded human Intestine tissue, stained with anti-Human IgA rabbit monoclonal antibody clone RM513 at 1:200 dilution.