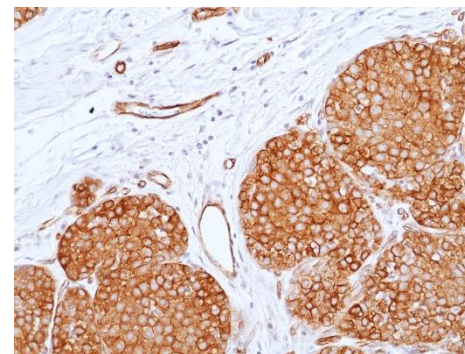
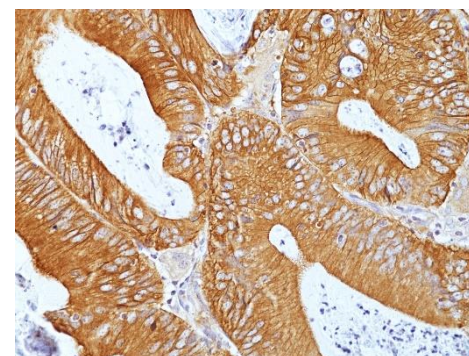


## Specifications Sheet

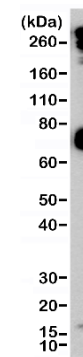
<b>Product:</b>	Rabbit Monoclonal Antibody Anti-CD155 (PVR) Rabbit Monoclonal Antibody, Clone RM514
<b>Catalog No.:</b>	31-1406-00
<b>Clone:</b>	RM514
<b>Specificity:</b>	This antibody reacts to human CD155 (PVR) (Poliovirus receptor) ( NECL-5)
<b>Application:</b>	Immunohistochemistry (IHC), Western Blot (WB)
<b>Immunogen:</b>	A peptide corresponding to residues near the C-terminus of human CD155
<b>Purity:</b>	Protein A affinity purified from an animal origin-free culture supernatant
<b>Size:</b>	100 µL
<b>Buffer:</b>	50% Glycerol/PBS with 1% BSA and 0.09% sodium azide
<b>Usage:</b>	IHC: 1:100 -1:500 dilution; WB: 1:500 - 1:1000 dilution.
<b>Storage and Stability:</b>	Stable for 1 Year at -20.0°C from date of receipt.
<b>Country of Origin:</b>	U.S.A.
<b>Intended Use:</b>	<b>For Research Use Only Not for Diagnostic or Therapeutic Use</b>



Immunohistochemical staining of formalin fixed and paraffin embedded human Breast Cancer tissue sections using Anti-CD155 Rabbit Monoclonal Antibody (RM514) at 1:500 dilution.



Immunohistochemical staining of formalin fixed and paraffin embedded human Colon Cancer tissue sections using Anti-CD155 Rabbit Monoclonal Antibody (RM514) at 1:100 dilution.



Western Blot of HeLa cell lysate using Anti-CD155 Rabbit Monoclonal Antibody (RM514) at 1:500 dilution.