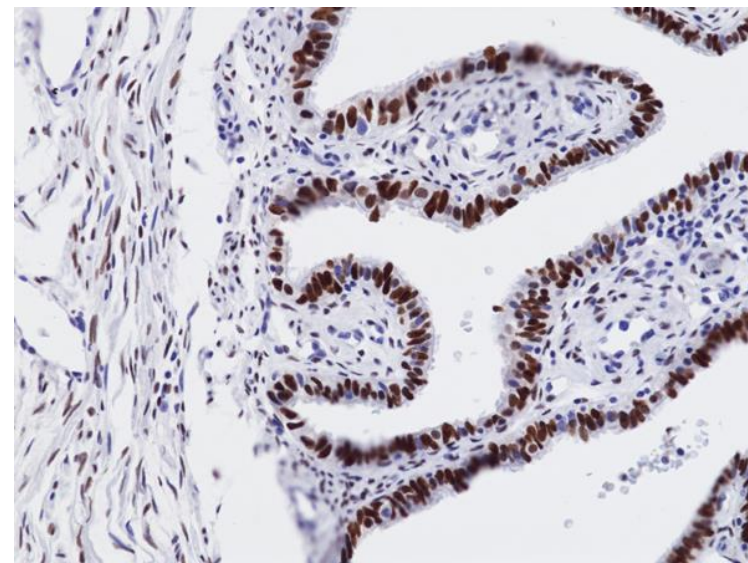
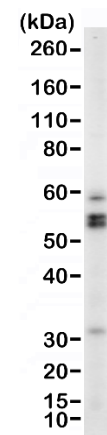


Specification Sheet

Product:	Rabbit Monoclonal Antibody Anti-WT1 Rabbit Monoclonal Antibody, Clone RM516
Catalog No.:	31-1408-00
Clone:	RM516
Specificity:	This antibody reacts to human WT1 (Wilms tumor protein)
Application:	Immunohistochemistry (IHC), Western Blot (WB)
Immunogen:	A peptide corresponding to residues near the N-terminus of human WT1
Purity:	Protein A affinity purified from an animal origin-free culture supernatant
Size:	100 µL
Buffer:	50% Glycerol/PBS with 1% BSA and 0.09% sodium azide
Usage:	IHC: 1:100 -1:200 dilution; WB: 1:500 - 1:1000 dilution.
Storage and Stability:	Stable for 1 Year at -20.0°C from date of receipt.
Country of Origin:	U.S.A.
Intended Use:	For Research Use Only Not for Diagnostic or Therapeutic Use



Immunohistochemical staining of formalin fixed and paraffin embedded human Fallopian tissue sections using Anti-WT1 Rabbit Monoclonal Antibody (RM516) at 1:100 dilution.



Western Blot of K562 cells lysate using Anti-Wt1 Rabbit Monoclonal Antibody (RM516) at 1:500 dilution.